



BELGARD®
PAVES THE WAY™

T-BLOCK



**SOFA WITH
PLANTERS**

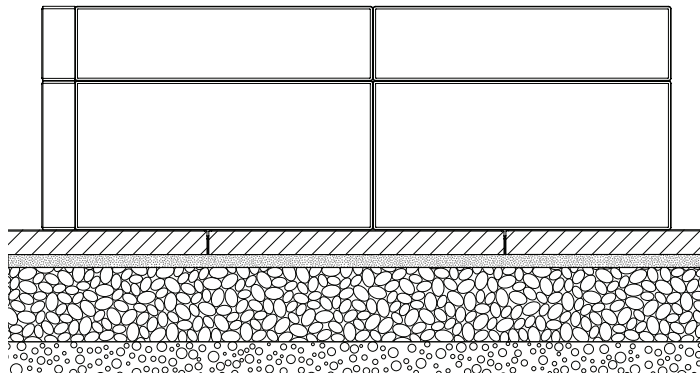
T-BLOCK

COMPLETE THIS STEP
FIRST FOR ALL PROJECTS

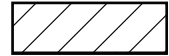
BASE PREPARATION

Always level ground before installation

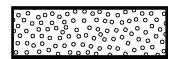
ON NEW OR EXISTING PATIO



SLAB OR PAVER



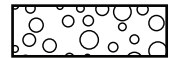
BEDDING SAND 1"



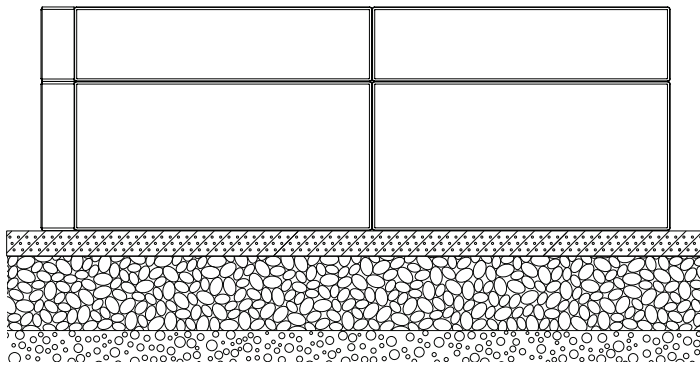
COMPACTED AGGREGATES 6"-8"



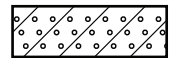
SOIL



ON POURED CONCRETE



REINFORCED POURED CONCRETE FOUNDATION 2"



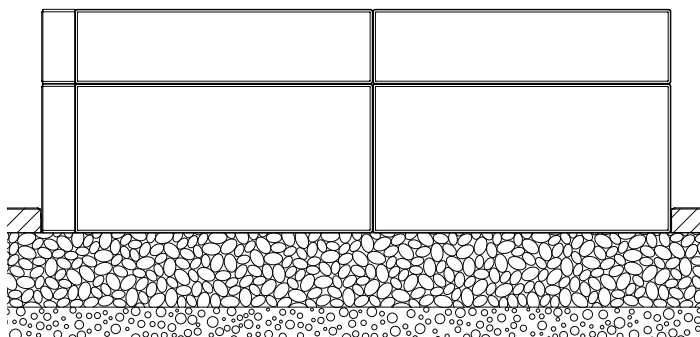
COMPACTED AGGREGATES 6"-8"



SOIL



ON COMPACTED FOUNDATION



SLAB OR PAVER



COMPACTED AGGREGATES 6"-8"

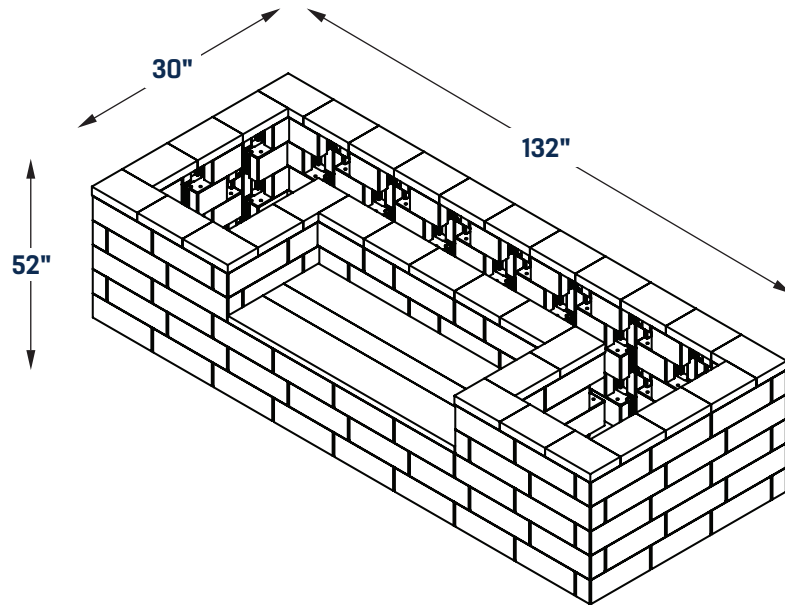


SOIL

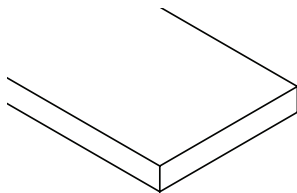


T-BLOCK

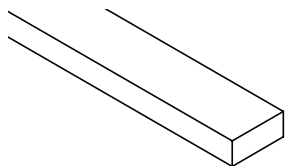
SOFA WITH
PLANTERS



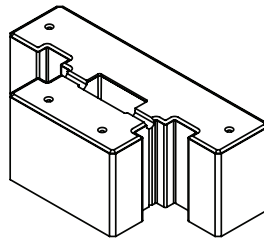
COMPONENTS



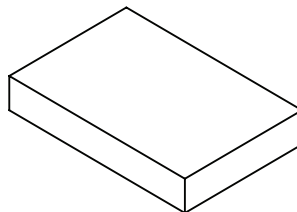
2" x 10" x 8' (x2)



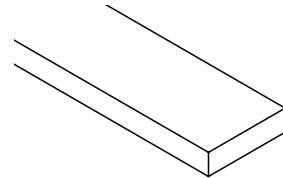
2" x 4" x 8' (x1)



T-Block (x156)



Cap (x32)



2" x 6" x 8' (x1)



Glue Tube

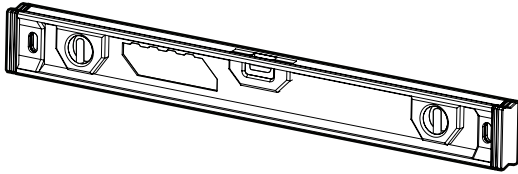


No.8 x 3" (x12)

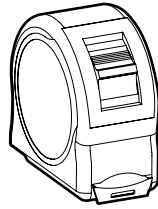
T-BLOCK

SOFA WITH
PLANTERS

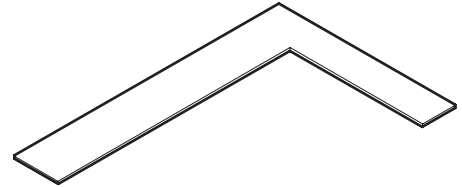
REQUIRED TOOLS



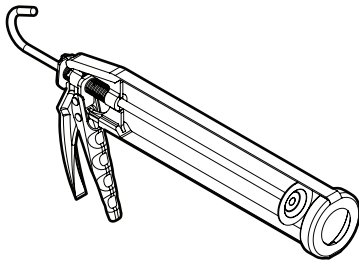
LEVEL



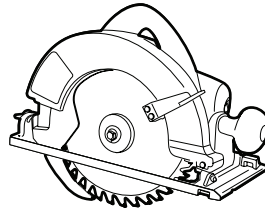
MEASURING
TAPE



CARPENTER
SQUARE



SILICONE
GUN

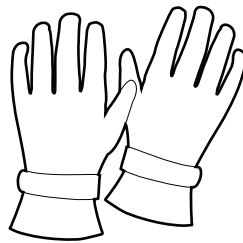


SKILSAW

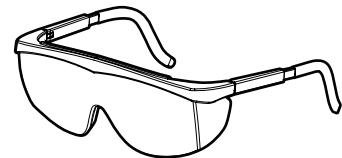
SAFETY EQUIPMENT



SAFETY BOOTS



GLOVES

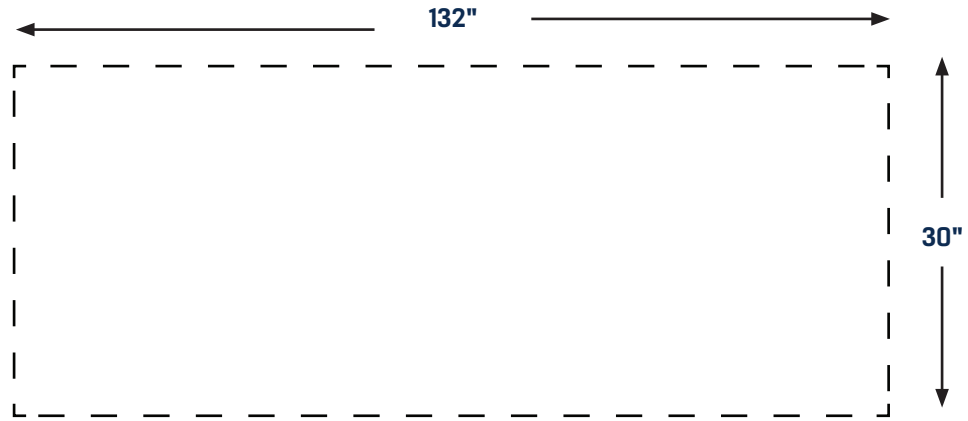


SAFETY GLASSES

T-BLOCK

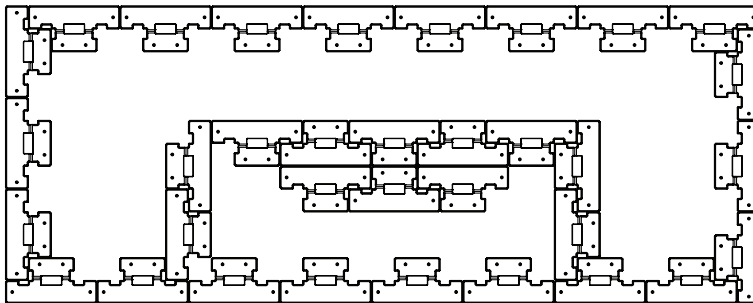
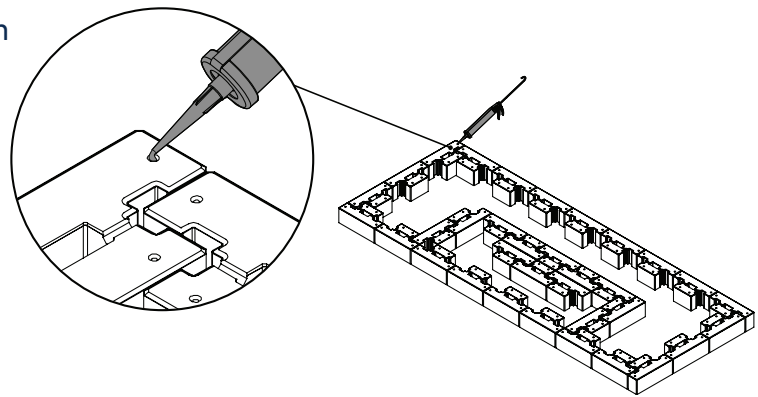
SOFA WITH PLANTERS

①



②

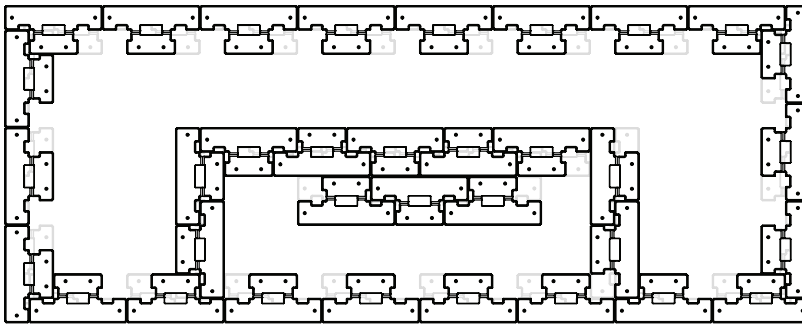
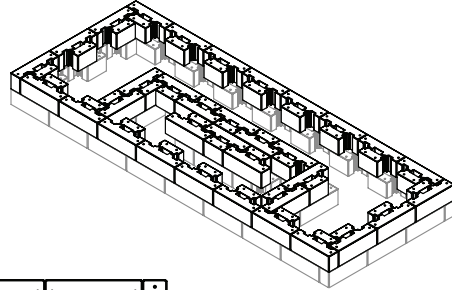
Do not forget to add glue in the cavities before laying down your next level.



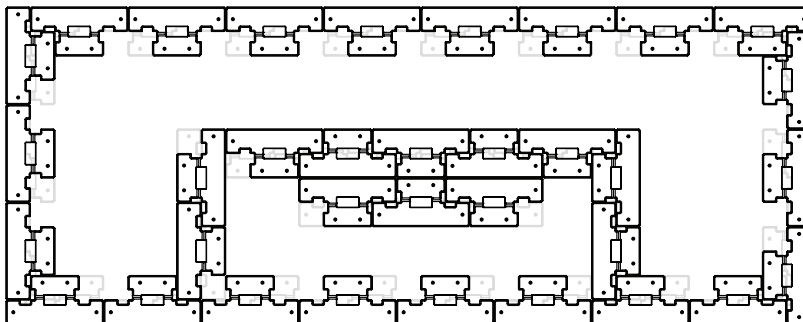
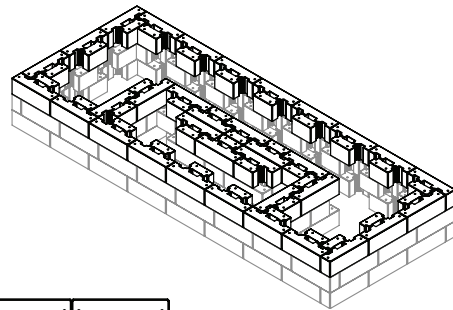
T-BLOCK

SOFA WITH PLANTERS

- 3 Do not forget to add glue in the cavities before laying down your next level.



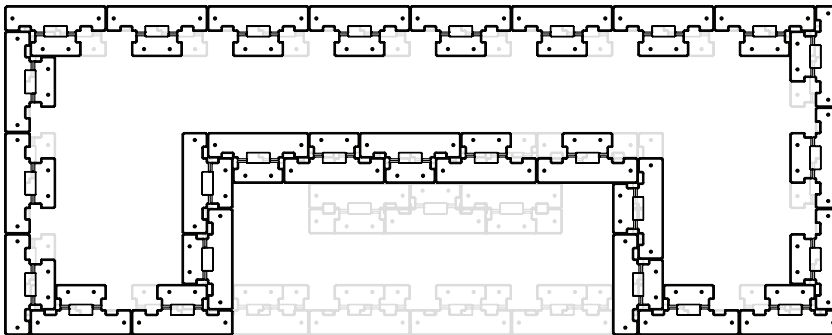
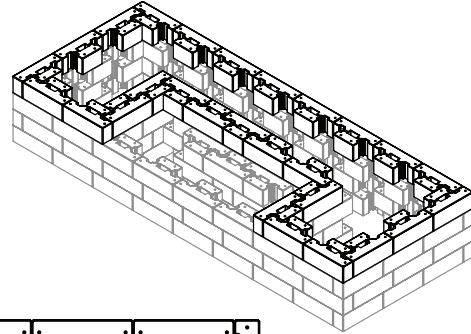
- 4 Do not forget to add glue in the cavities before laying down your next level.



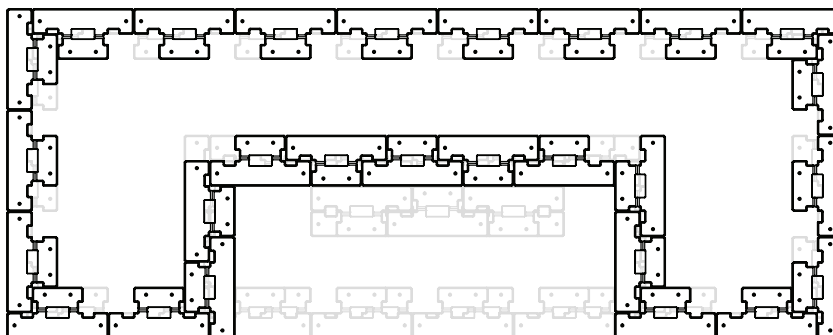
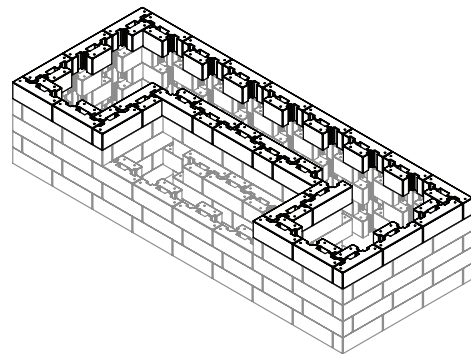
T-BLOCK

SOFA WITH PLANTERS

- 5 Do not forget to add glue in the cavities before laying down your next level.



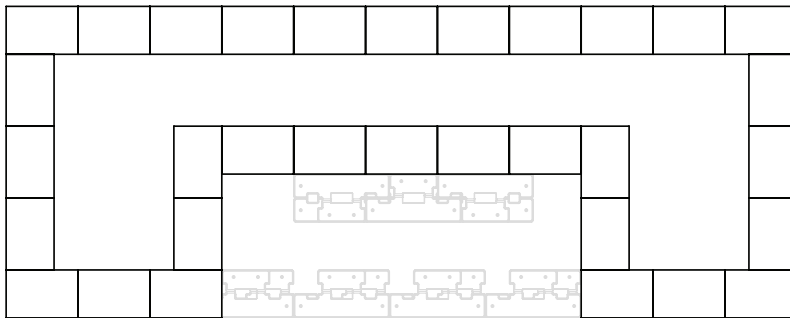
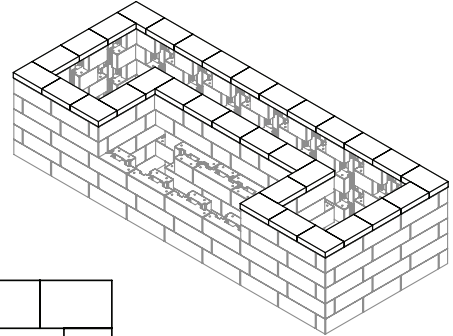
- 6 Do not forget to add glue in the cavities before laying down your next level.



T-BLOCK

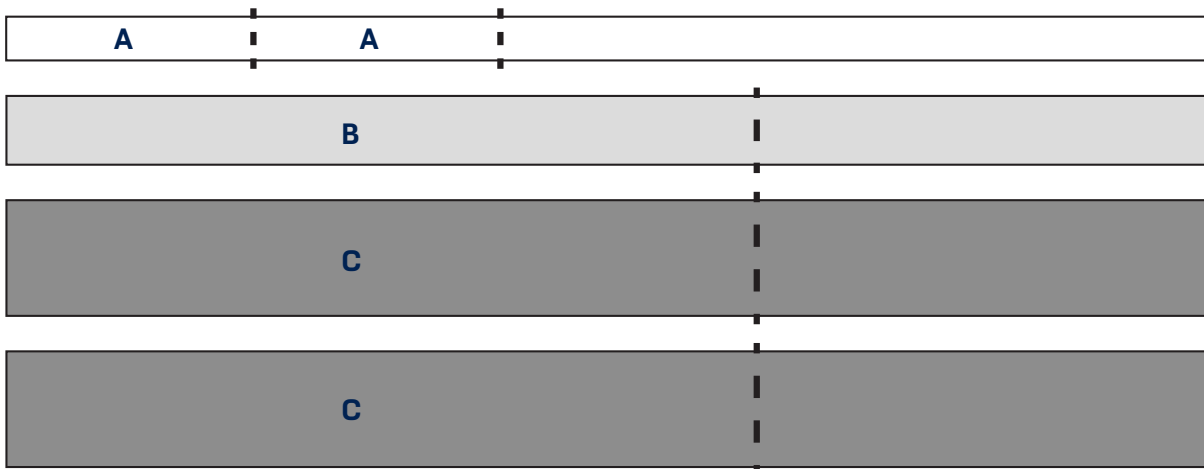
SOFA WITH PLANTERS

- 7 Do not forget to add glue in the cavities before laying down your next level.



WOOD CUTS

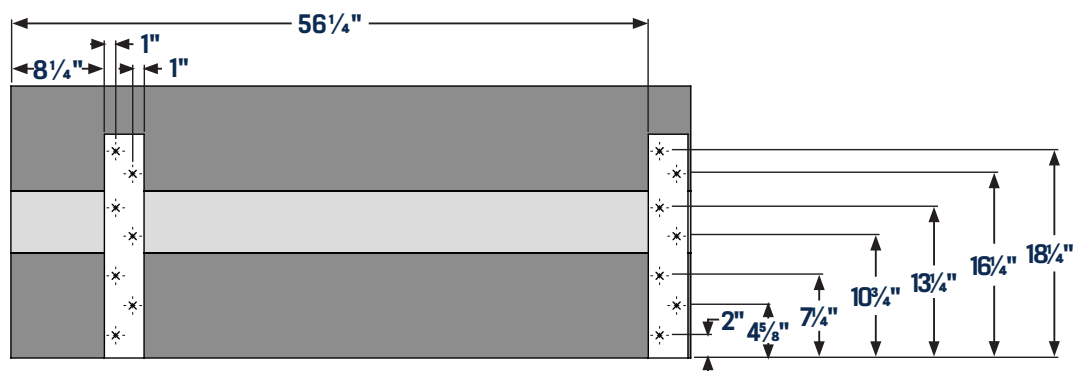
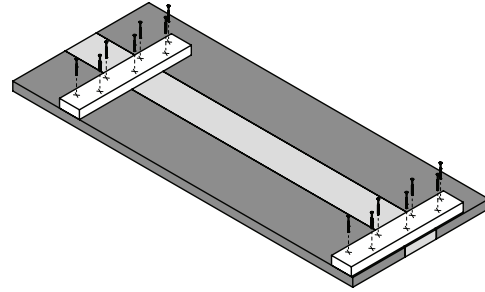
- 2" x 4" x 8' A = 19³/₄"
- 2" x 6" x 8' B = 60"
- 2" x 10" x 8' C = 60"



T-BLOCK

SOFA WITH PLANTERS

- 8 Do not forget to add glue in the cavities before laying down your next row.



- 9 Do not forget to add glue in the cavities before laying down the seat.

