

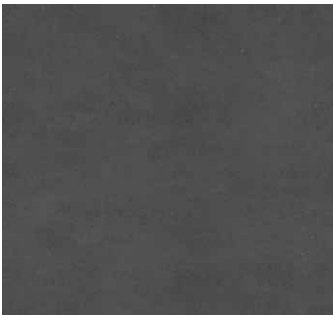
METROPOLITAN COLLECTION

VS5

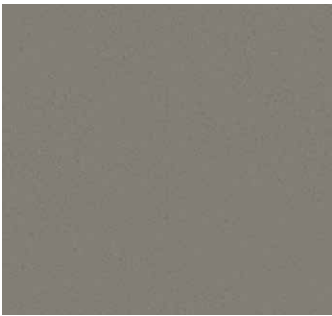
PAVER 88MM | 108MM



This smooth-faced paver offers complete shift prevention on all four sides of the stone, with a design that ensure stones will always fit together, regardless of rotation.



CHARCOAL  
*Prairies Only*



GREY



MIDNIGHT  
*BC Only*



SCANDINA GREY  
*BC Only*



SHADED GREY  
*BC Only*



TOFINO GREY

*\*Also available in Dark Charcoal*

*Due to the natural materials in our products, colours may vary from those shown on the cut sheet. We recommend viewing actual product samples to ensure the perfect colour and finish for each project.*



MODULAR  
SIZING



ADA  
COMPLIANT



MECHANICAL  
INSTALL

## QUALITY FOR LIFE

Every step of our manufacturing process incorporates rigorous research, testing and quality assurance. We demand the highest quality from each of our facilities across North America. We believe in creating world class building products that stand the test of time. See our lifetime warranty at [Beldgard.ca/Warranty](https://belgard.ca/Warranty)

## FEATURES & BENEFITS

- Contemporary smooth face and clean lines
- Designed to be diagonally symmetrical so the pavers always fit together – regardless of how they are rotated.
- 4 sizes allow for modularity and virtually limitless design options
- Manufactured to CSA A231.2 specification
- Concrete strength: 8000 PSI (55 MPA)
- Absorption: Shall not exceed 5%
- Can be utilized to construct an ACA (Accessible Canada Regulation) compliant pavement

## SHAPES & SIZES

### 75 X 300 | 108MM



75 X 300 x 108mm  
3 x 12 x 4<sup>5</sup>/<sub>16</sub>"

### 150 X 300 | 108MM



150 X 300 x 108mm  
6 x 12 x 4<sup>5</sup>/<sub>16</sub>"

### 300 X 300 | 108MM



300 X 300 x 108mm  
12 x 12 x 4<sup>5</sup>/<sub>16</sub>"

### 300 X 600 | 108MM



300 X 600 x 108mm  
12 x 24 x 4<sup>5</sup>/<sub>16</sub>"

### 75 X 300 | 88MM



75 X 300 x 88mm  
3 x 12 x 3.46"

### 150 X 300 | 88MM



150 X 300 x 88mm  
6 x 12 x 3.46"

### 300 X 300 | 88MM



300 X 300 x 88mm  
12 x 12 x 3.46"

### 300 X 600



300 X 600 x 108mm  
12 x 24 x 4<sup>5</sup>/<sub>16</sub>"



LEARN MORE

View the product page on [Beldgard.ca](https://belgard.ca) for more information

## PALLET INFORMATION

VS5		SQFT/ PALLET	UNITS/ LAYER	SQFT/ LAYER	LAYER/ PALLET	WEIGHT/ PALLET
75 X 300 108MM	75 X 300 x 108mm 3 x 12 x 4 <sup>5</sup> / <sub>16</sub> "	57.6	–	–	6	1274 kg / 2808 lbs
150 X 300 108MM	150 X 300 x 108mm 6 x 12 x 4 <sup>5</sup> / <sub>16</sub> "	70.2	–	–	6	1403 kg / 3095 lbs
300 X 300 108MM	300 X 300 x 108mm 12 x 12 x 4 <sup>5</sup> / <sub>16</sub> "	70.2	–	–	6	1536 kg / 3387 lbs
300 X 600 108MM	300 X 600 x 108mm 12 x 24 x 4 <sup>5</sup> / <sub>16</sub> "	70.2	–	–	6	1403 kg / 3095 lbs
75 X 300 88MM	75 X 300 x 88mm 3 x 12 x 3.46"	67.2	–	–	7	1190 kg / 2623 lbs
150 X 300 88MM	150 X 300 x 88mm 6 x 12 x 3.46"	81.9	–	–	7	1267 kg / 2793 lbs
300 X 300 88MM	300 X 300 x 88mm 12 x 12 x 3.46"	81.9	–	–	7	1344 kg / 2963 lbs
300 X 600	300 X 600 x 108mm 12 x 24 x 4 <sup>5</sup> / <sub>16</sub> "	81.9	–	–	7	1309 kg / 2885 lbs

Downloadable professional resources available at [Beldgard.ca/Resources](https://belgard.ca/Resources)

**BELGARD®** | PAVES  
THE WAY™

AN OLDCASTLE® APG OUTDOOR BRAND

**ALBERTA**  
28234 Acheson Road  
Acheson, AB, T7X 6A9  
Toll Free: 1.800.232.9443

**ALBERTA SOUTH**  
260032 RR 291  
Rockyview County, AB, T4A 0T8  
Toll Free: 1.800.279.3728

**BRITISH COLUMBIA**  
8910 River Road  
Delta BC, V4G 1B5  
Toll Free: 1.800.556.9733

**MANITOBA**  
1436 Chevrier Blvd  
Winnipeg, MB, R3T 1Y6  
Toll Free: 1.800.262.8869