

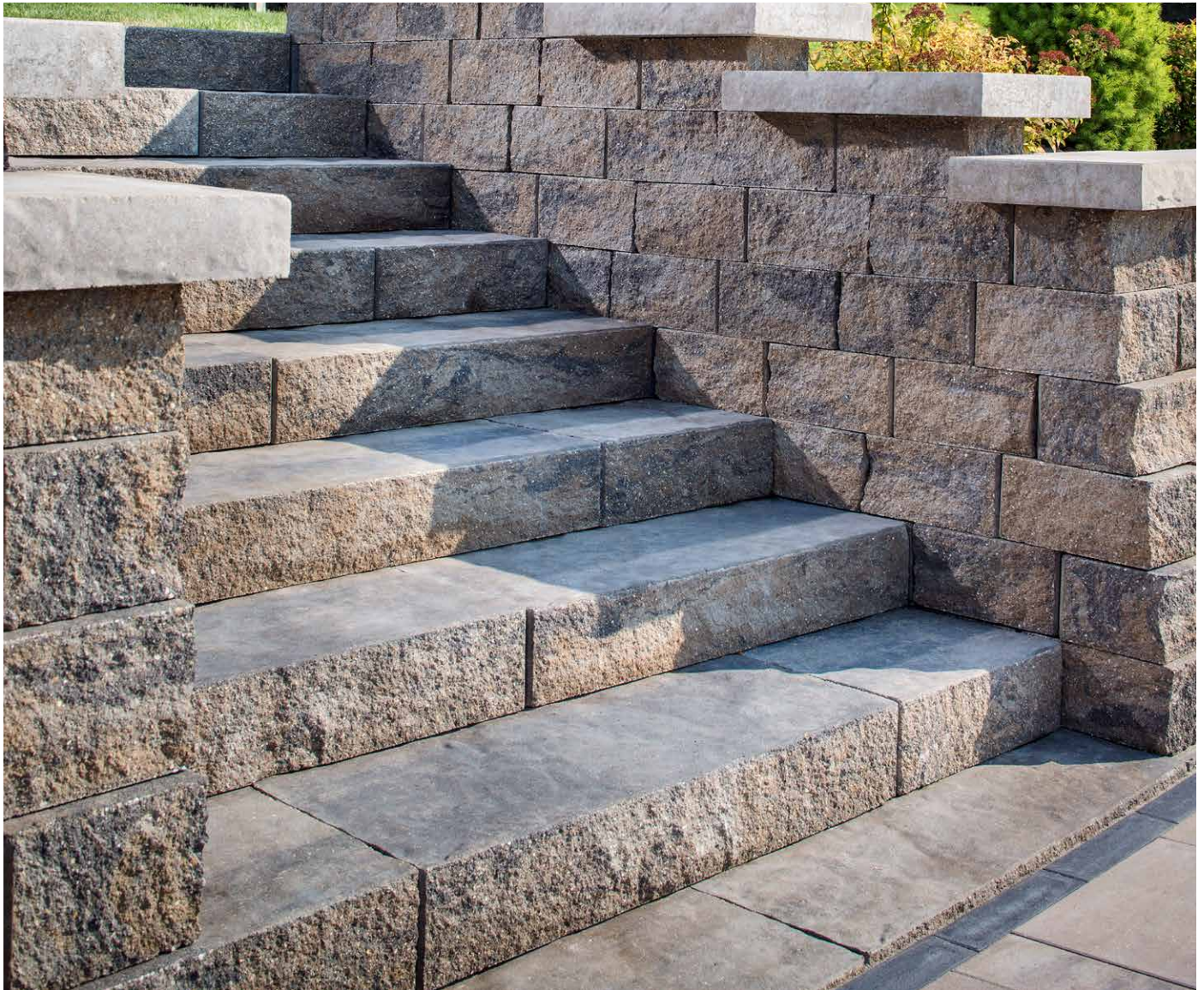
HERITAGE COLLECTION

GRANIKA STEP[®]

STEP UNIT



The natural granite look offers a quarried face on the step tread with smooth sides to create longer treads. The double-sided rise texture allows rotation for optimal aesthetics.



ASHBURY HAZE



COTSWOLD MIST

Due to the natural materials in our products, colors may vary from those shown on the cut sheet. We recommend viewing actual product samples to ensure the perfect color and finish for each project.



QUALITY FOR LIFE

Every step of our manufacturing process incorporates rigorous research, testing and quality assurance. We demand the highest quality from each of our facilities across North America. We believe in creating world class building products that stand the test of time. See our lifetime warranty at [Belgard.com/Warranty](https://belgard.com/Warranty)

FEATURES & BENEFITS

- Double-sided texture and two unique faces on the rise allow steps to be rotated for optimal aesthetics
- Smooth sides allow steps to be placed side by side for longer treads
- Granite-like texture on tread surface
- Even bottom and consistent size offer installation ease
- Palletized for easy removal by skid-steer loader Dry-cast production provides consistent color throughout unit
- Riser faces are uniquely designed to nest together, creating an optional landing with a narrow joint

SHAPES & SIZES

STEP UNIT



6 x 48 x 18

PALLET INFORMATION

GRANIKA STEP®		LNFT/ PALLET	LNFT/ LAYER	LAYER/ PALLET	UNITS/ PALLET	WEIGHT/ PALLET
STEP UNIT	6 x 48 x 18	9	3	8	278	2656

Downloadable professional resources available at [Belgard.com/Resources](https://belgard.com/Resources)

View the product page on [Belgard.com](https://belgard.com) for more information



LEARN MORE

BELGARD® | PAVES
THE WAY™

AN OLDCASTLE® APG OUTDOOR BRAND

MUNDELEIN
One Hunt Court
Mundelein, IL 60060
Ph: 877-222-1557

MENOMONEE FALLS
N59 W14909 Bobolink Ave.
Menomonee Falls, WI 53051
Ph: 262-338-5700

MORRIS
3400 Bungalow Road
Morris, IL 60450
Ph: 800-358-3003

SHAKOPEE
3450 Johnson Memorial
Drive, Shakopee, MN 55379
Ph: 952-351-9600

© 2025 Oldcastle® APG, Inc. All Rights Reserved. BEL24-D-321946 | Northfield | Revised 01/2025