

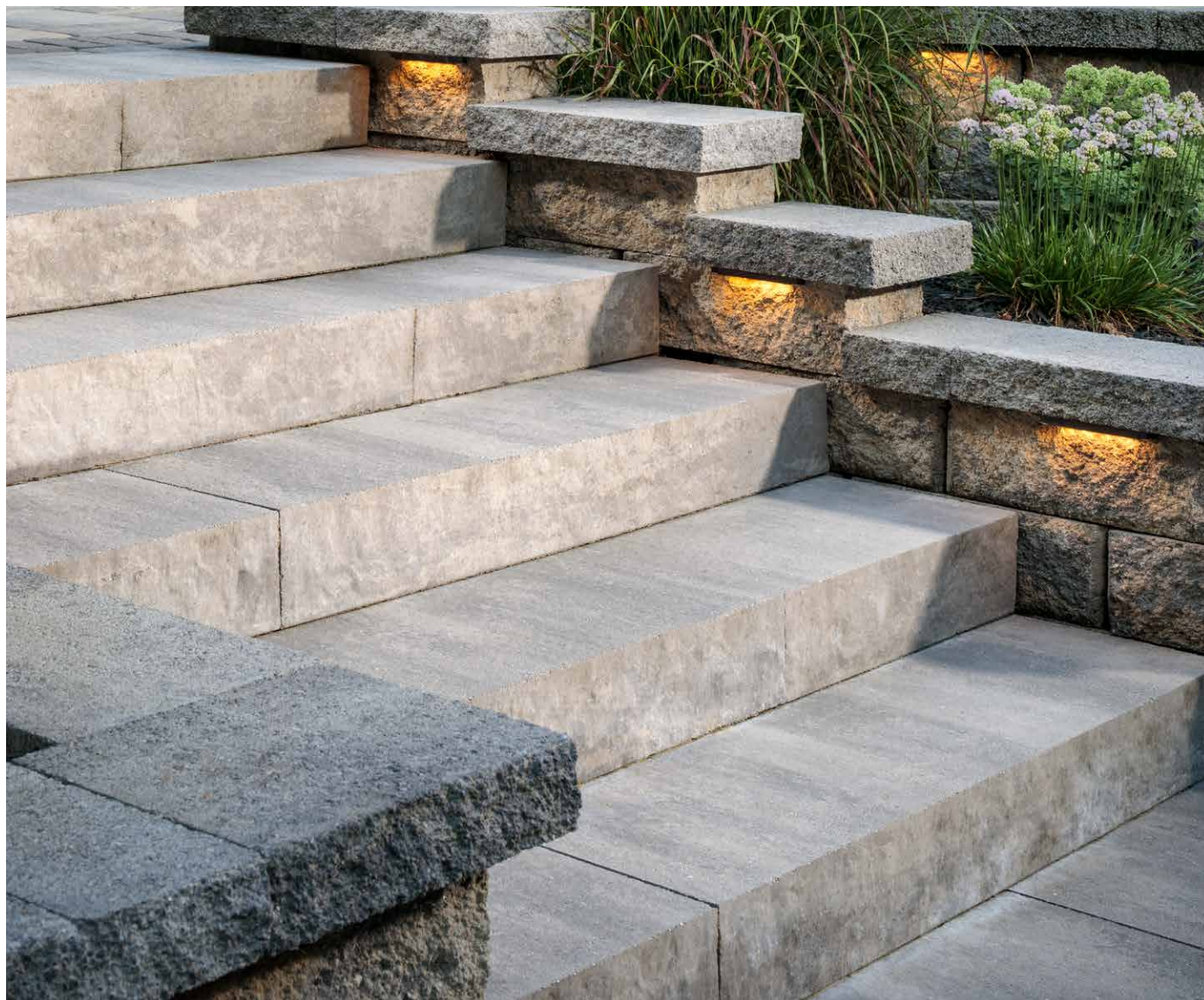
NATURAL COLLECTION

# LANDINGS™

## STEP UNIT



The weathered step tread and chiseled look of quarried limestone on the rise adds grand style to landscape level changes, while the smooth face of the remaining sides allows for greater design flexibility.



BOURBON



NEWPORT GRAY



SILEX BLEND

*Due to the natural materials in our products, colors may vary from those shown on the cut sheet. We recommend viewing actual product samples to ensure the perfect color and finish for each project.*





## QUALITY FOR LIFE

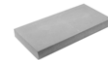
Every step of our manufacturing process incorporates rigorous research, testing and quality assurance. We demand the highest quality from each of our facilities across North America. We believe in creating world class building products that stand the test of time. See our lifetime warranty at [Belgard.com/Warranty](https://www.belgard.com/Warranty)

## FEATURES & BENEFITS

- Double-sided texture and two unique faces on the rise allow steps to be rotated for optimal aesthetics
- Smooth sides allow steps to be placed side by side for longer treads
- Granite-like texture on tread surface
- Even bottom and consistent size offer installation ease
- Palletized for easy removal by skid-steer loader
- Dry-cast production provides consistent color throughout unit
- Riser faces are uniquely designed to nest together, creating an optional landing with a narrow joint

## SHAPES & SIZES

### STEP UNIT



6 x 48 x 18

## PALLET INFORMATION

LANDINGS™ STEP		LNFT/ PALLET	LNFT/ LAYER	LAYER/ PALLET	UNITS/ PALLET	WEIGHT/ PALLET
STEP UNIT	6 x 48 x 18	-	-	2	2	860

Downloadable professional resources available at [Belgard.com/Resources](https://www.belgard.com/Resources)

View the product page on [Belgard.com](https://www.belgard.com) for more information



LEARN MORE

**BELGARD®** | PAVES  
THE WAY™

AN OLDCASTLE® APG OUTDOOR BRAND

**WOODBURY**  
201 Park Ave  
Woodbury, NJ 08096

**PARKER FORD**  
16 Anderson Rd  
Parker Ford, PA 19457

**WRIGHTSTOWN**  
2 Farago Blvd  
Wrightstown, NJ 08640

© 2025 Oldcastle® APG, Inc. All Rights Reserved. BEL24-D-322219 | Metro | Revised 01/2025