

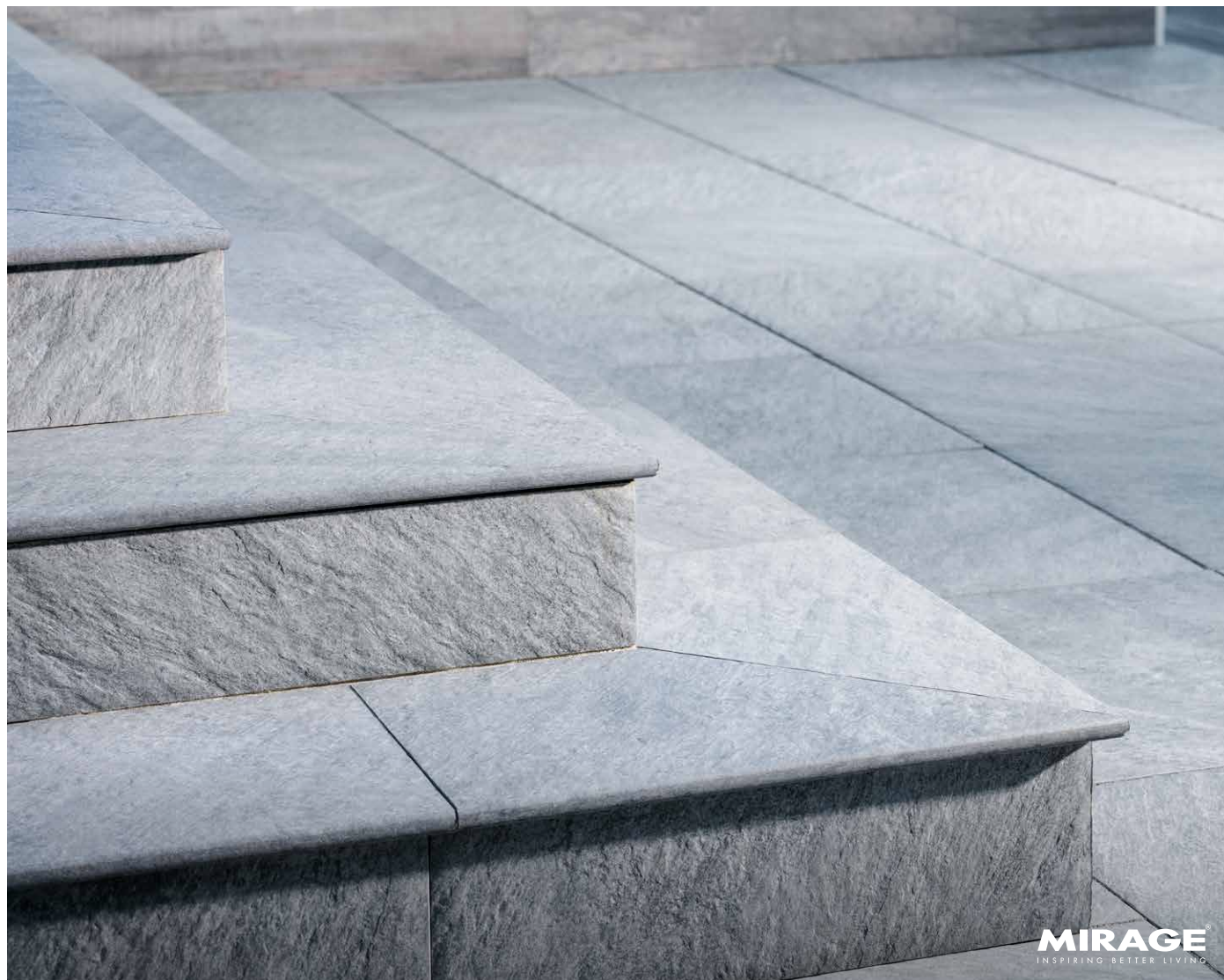
PORCELAIN COLLECTION

UNICO 2.0

COPING | 20MM




Enhance your outdoor spaces with our premium porcelain coping that provides a matching finish touch to Quarziti 2.0 and also complements our other porcelain paver lines.



v3  **GLACIER**
QR 01 NAT



v3  **WATERFALL**
QR 03 NAT

Due to the natural materials in our products, colors may vary from those shown on the cut sheet. We recommend viewing actual product samples to ensure the perfect color and finish for each project.



QUALITY FOR LIFE

Every step of our manufacturing process incorporates rigorous research, testing and quality assurance. We demand the highest quality from each of our facilities across North America. We believe in creating world class building products that stand the test of time. See our lifetime warranty at [Beldgard.com/Warranty](https://Belgard.com/Warranty)

FEATURES & BENEFITS

- Sleek, polished round edge
- Featuring authentic look of natural quartz to coordinate with Quarziti 2.0 pavers
- Use for steps or as coping for swimming pools
- High density and ultra-low absorption rate creates a tight surface texture and fends off surface mold, moss, dirt and other type of stains
- Unaffected by alkalis, acids, chemical agents, salt and other de-icing materials
- Structured top textures create non-slip surfaces
- Freeze thaw resistant—100% frost-free and properties remain unaltered at temperatures ranging from -51.1° to + 60° C (-60°F to +140°F)

SHAPES & SIZES

COPING



11.62 x 23.54 x 3/4



MODERATE
VARIATION



LOW SOLAR HEAT
ABSORPTION

PALLET INFORMATION

UNICO 2.0		SOFT/ PALLET	SOFT/ BOX	BOXES/ PALLET	PCS/ BOX	WEIGHT/ BOX	WEIGHT/ PALLET
COPING	11.62 x 23.54 x 3/4	205.2	5.7	36	3	54	1944

Downloadable professional resources available at
Beldgard.com/Resources

View the product page
on Beldgard.com for
more information



LEARN MORE

BELGARD® | PAVES
THE WAY™

AN OLDCASTLE® APG OUTDOOR BRAND

JONESBORO
1443 Battlecreek Road
Jonesboro, GA 30236
Ph: 770-478-8817

© 2025 Oldcastle® APG, Inc. All Rights Reserved. BEL24-D-322452 | GMS South | Revised 01/2025