

NATURAL COLLECTION

ORIGINS™ 18

3-PIECE SYSTEM | 60MM



Emulating the look and texture of natural stone, this paver system offers earthy tones and a slightly chiseled surface that blends with outdoor environments.



CHESWICK



AVONDALE



IRON BAY

Due to the natural materials in our products, colors may vary from those shown on the cut sheet. We recommend viewing actual product samples to ensure the perfect color and finish for each project.



MODULAR
SIZING



ADA
COMPLIANT

QUALITY FOR LIFE

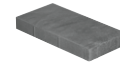
Every step of our manufacturing process incorporates rigorous research, testing and quality assurance. We demand the highest quality from each of our facilities across North America. We believe in creating world class building products that stand the test of time. See our lifetime warranty at [Belgard.com/Warranty](https://www.belgard.com/Warranty)

FEATURES & BENEFITS

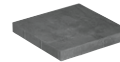
- Look and feel of natural stone
- Contemporary larger-format sizing
- Maximized pallet layout for jobsite efficiencies
- Reduced cuts, installation time and waste
- Increased options for creative patterns
- Simplified quoting and design of projects
- Uniform dimensions compatible with other Origins paver sizes
- Sizing compatible with all Belgard modular paver lines, like Dimensions™ and Papyrus™

SHAPES & SIZES

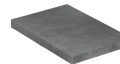
3-PIECE



9 x 18 x 2 $\frac{3}{8}$



18 x 18 x 2 $\frac{3}{8}$



18 x 27 x 2 $\frac{3}{8}$

PALLET INFORMATION

ORIGINS™ 18		SQFT/ PALLET	UNITS/ LAYER	SQFT/ LAYER	LAYER/ PALLET	WEIGHT/ PALLET
3-PIECE	9 x 18 x 2 $\frac{3}{8}$	112.5	-	11.25	10	3516
	18 x 18 x 2 $\frac{3}{8}$		-			
	18 x 27 x 2 $\frac{3}{8}$		-			

Downloadable professional resources available at [Belgard.com/Resources](https://www.belgard.com/Resources)

View the product page on [Belgard.com](https://www.belgard.com) for more information



LEARN MORE

BELGARD® | PAVES
THE WAY™

AN OLDCASTLE® APG OUTDOOR BRAND

JONESBORO
1443 Battlecreek Road
Jonesboro, GA 30236
Ph: 770-478-8817

© 2025 Oldcastle® APG, Inc. All Rights Reserved. BEL24-D-322452 | GMS South | Revised 01/2025