

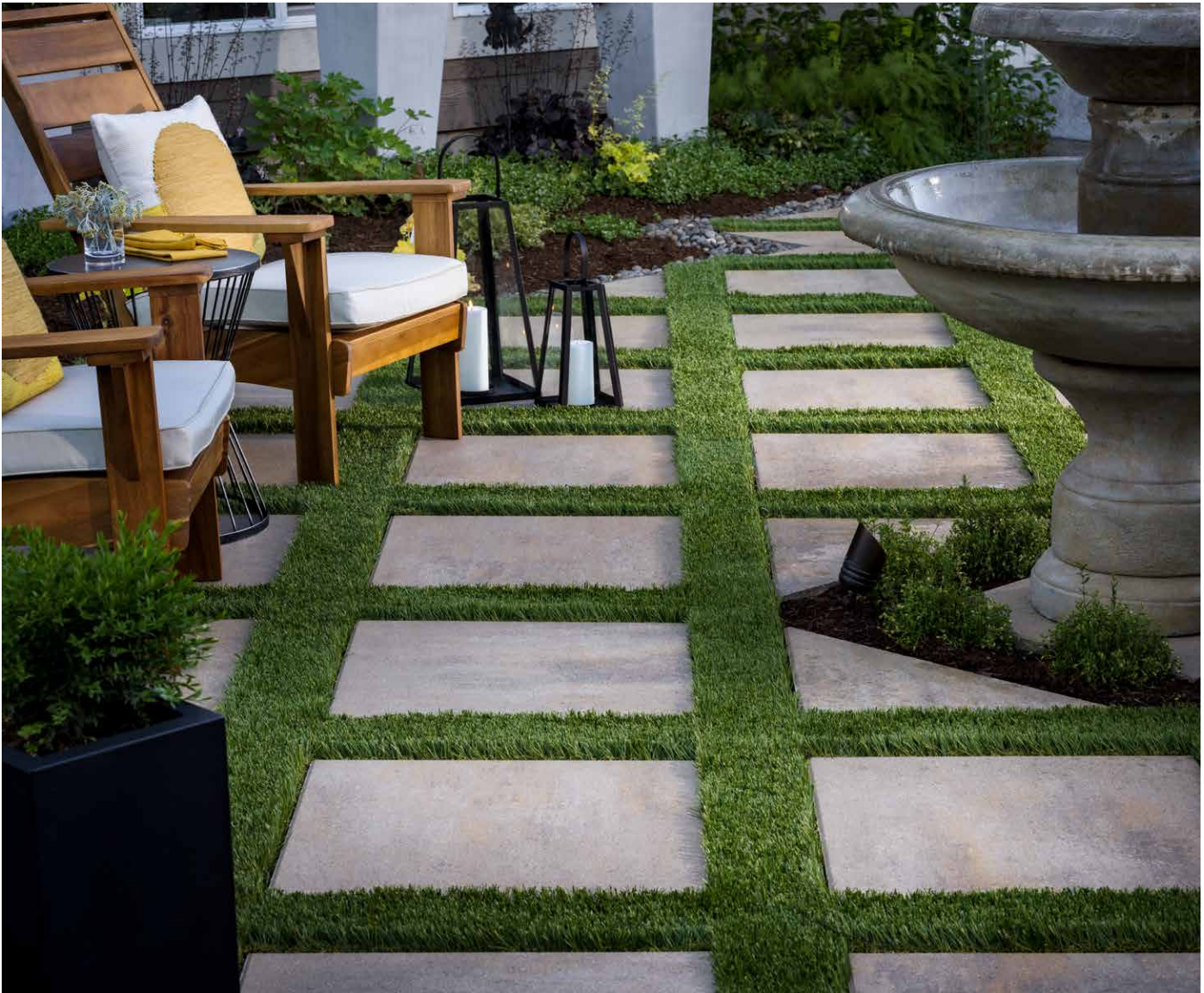
METROPOLITAN COLLECTION

# DIMENSIONS™

SLAB | 60MM



The expansive size is distinguished by clean, crisp lines and a smooth, linear surface, which make it a superior choice for contemporary designs.



DARK CHARCOAL



RIO



VICTORIAN

*Due to the natural materials in our products, colors may vary from those shown on the cut sheet. We recommend viewing actual product samples to ensure the perfect color and finish for each project.*





## QUALITY FOR LIFE

Every step of our manufacturing process incorporates rigorous research, testing and quality assurance. We demand the highest quality from each of our facilities across North America. We believe in creating world class building products that stand the test of time. See our lifetime warranty at [Beldgard.com/Warranty](https://Belgard.com/Warranty)

## FEATURES & BENEFITS

- Smooth face with clean, crisp lines
- Contemporary larger format sizing
- Maximized pallet layout for jobsite efficiencies
- Reduced cuts, installation time and waste
- Increased options for creative patterns
- Simplified quoting and design of projects
- Uniform dimensions compatible with other Dimensions paver sizes
- Sizing compatible with other Belgard modular paver lines, like Origins™ and Papyrus™

## SHAPES & SIZES

12 X 24 | 60MM



12 x 24 x 2 $\frac{3}{8}$

24 X 24 | 60MM



24 x 24 x 2 $\frac{3}{8}$



MODULAR  
SIZING



ADA  
COMPLIANT

## PALLET INFORMATION

DIMENSIONS™ SLAB		SQFT/ PALLET	UNITS/ LAYER	SQFT/ LAYER	LAYER/ PALLET	WEIGHT/ PALLET
12 X 24 60MM	12 x 24 x 2 $\frac{3}{8}$	120	6	12	10	3230
24 X 24 60MM	24 x 24 x 2 $\frac{3}{8}$	80	2	8	10	2454

Downloadable professional resources available at  
[Beldgard.com/Resources](https://Belgard.com/Resources)

View the product page  
on [Beldgard.com](https://Belgard.com) for  
more information



**BELGARD®** | PAVES  
THE WAY™

AN OLDCASTLE® APG OUTDOOR BRAND

**TACOMA**  
4110 192nd St. East  
Tacoma, WA 98446  
Ph: 844-371-5138

© 2025 Oldcastle® APG, Inc. All Rights Reserved. BEL24-D-322395 | CPM | Revised 01/2025