

METROPOLITAN COLLECTION

# DIMENSIONS™

PAVER | 60MM



Accentuate contemporary style with a smooth linear surface enriched with DuraFusion Technology for enhanced color, texture and wear-resistance.

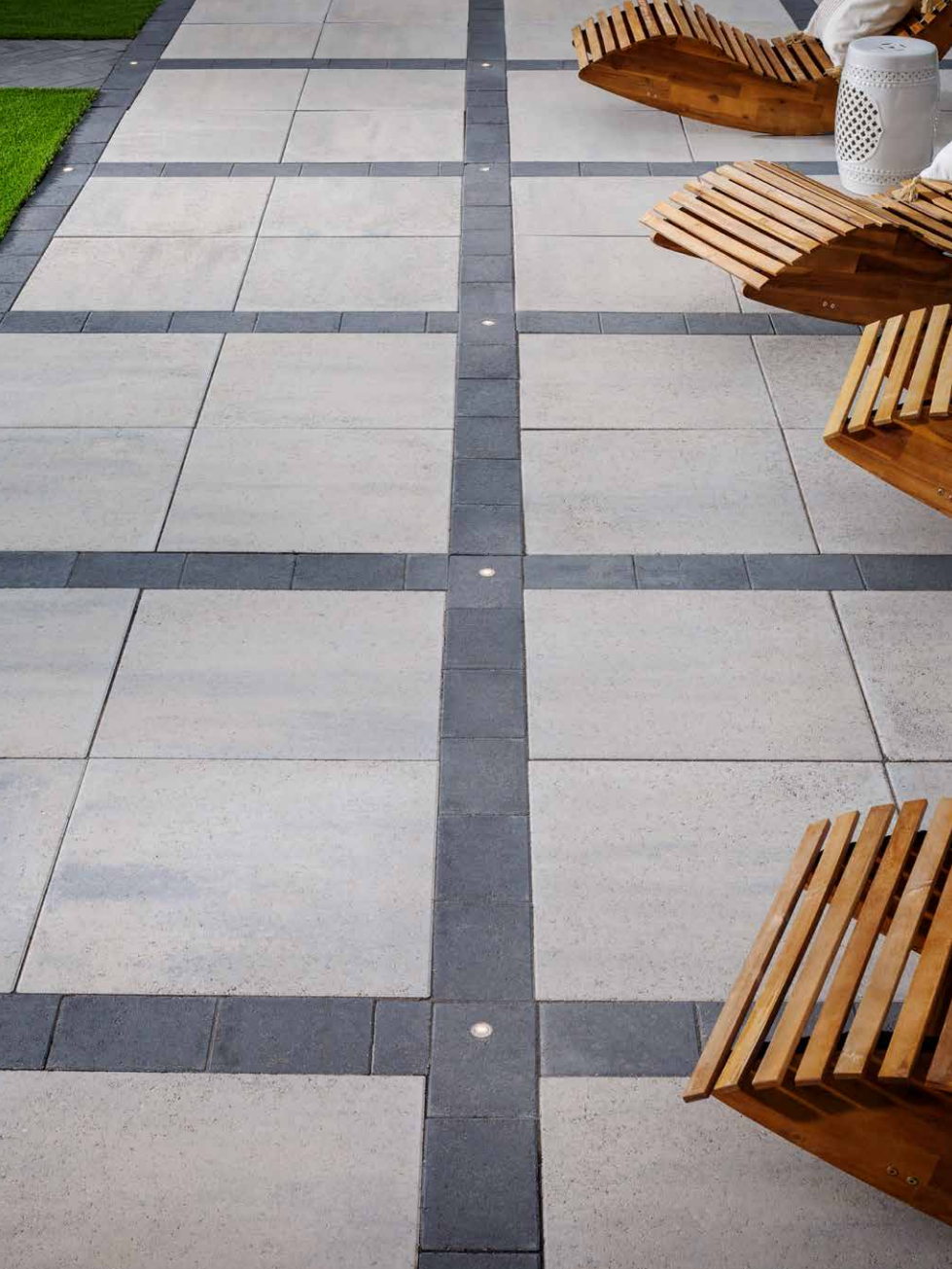


DIMENSIONS 6X9



MIDNIGHT 

*Due to the natural materials in our products, colors may vary from those shown on the cut sheet. We recommend viewing actual product samples to ensure the perfect color and finish for each project.*



## QUALITY FOR LIFE

Every step of our manufacturing process incorporates rigorous research, testing and quality assurance. We demand the highest quality from each of our facilities across North America. We believe in creating world class building products that stand the test of time. See our lifetime warranty at [Belgard.com/Warranty](https://www.belgard.com/Warranty)

## FEATURES & BENEFITS

- Clean lines and a modern architectural appearance
- Sized in true 3" increments for design and installation efficiencies
- Ideal for patios, walkways, accents, borders and residential vehicular applications
- Can be utilized to construct an ADA-compliant pavement
- 3 mm micro-chamfer width to minimize vibration and enhance wheelchair comfort
- Reduced cuts, installation time and waste
- Increased options for creative patterns



**DURAFUSION™ TECHNOLOGY**  
Refined texture with enhanced wear-resistance

## SHAPES & SIZES

6 X 9 | 60MM



6 x 9 x 2 $\frac{3}{8}$ "



MODULAR  
SIZING



DURAFUSION™  
TECHNOLOGY



DRIVEWAY  
APPROVED



ADA  
COMPLIANT

## PALLET INFORMATION

DIMENSIONS™ PAVER		SQFT/ PALLET	UNITS/ LAYER	SQFT/ LAYER	LAYER/ PALLET	WEIGHT/ PALLET
6 X 9 60MM	6 x 9 x 2 $\frac{3}{8}$ "	112.5	30	11.25	10	2982

Downloadable professional resources available at  
[Belgard.com/Resources](https://www.belgard.com/Resources)

View the product page  
on [Belgard.com](https://www.belgard.com) for  
more information



LEARN MORE

**BELGARD®** | PAVES  
THE WAY™

AN OLDCASTLE® APG OUTDOOR BRAND

**NORTH SALT LAKE**  
333 S. Redwood Road  
North Salt Lake, UT 84054  
Ph: 800-800-4004

**LOVELAND**  
1820 E / CO-402  
Loveland, CO 80537  
Ph: 970-669-0535

© 2025 Oldcastle® APG, Inc. All Rights Reserved. BEL24-D-322376 | Amcor | Revised 01/2025