

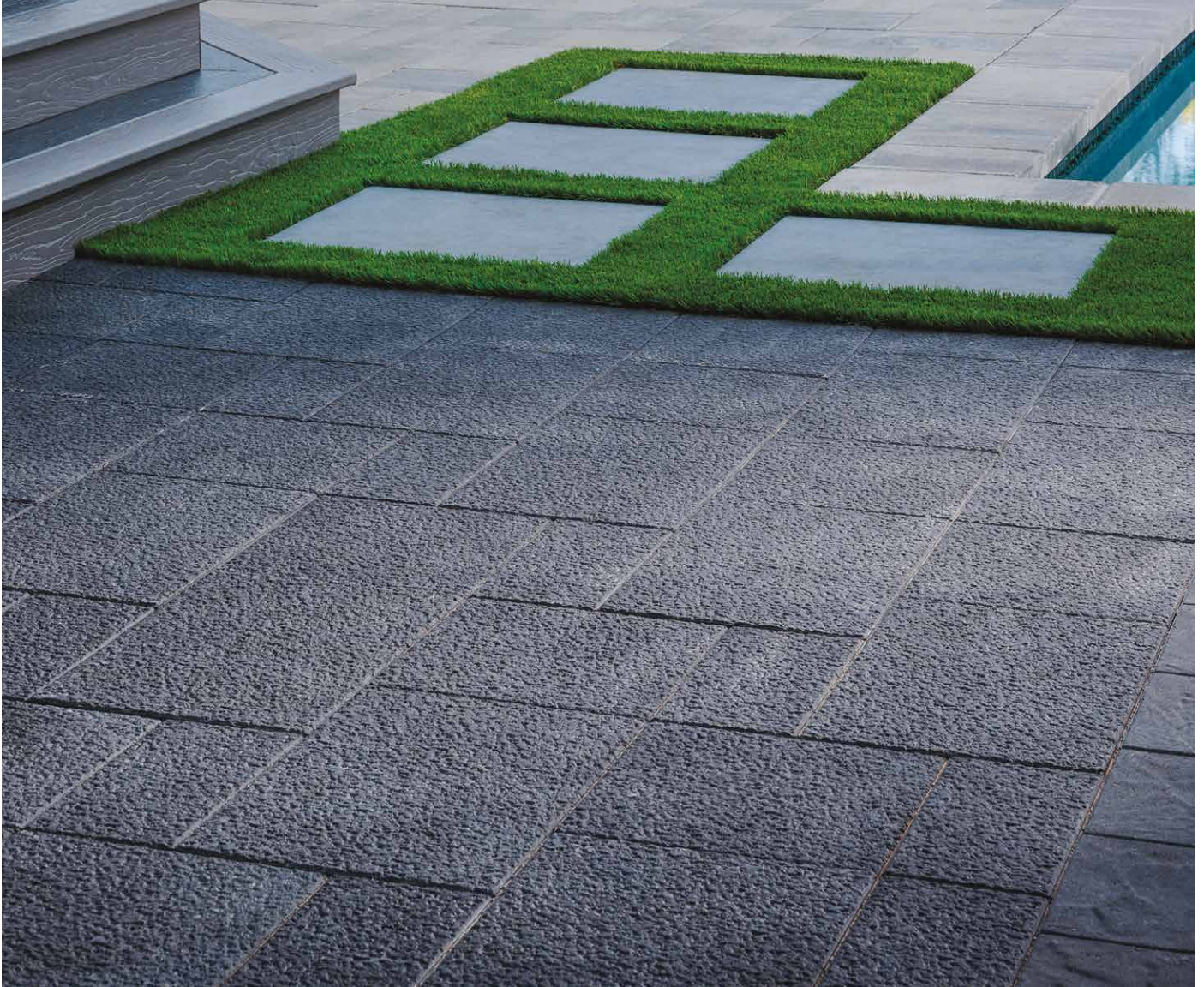
ARTISAN COLLECTION

# BASALT™

3-PIECE PAVER | 60MM



Offering the distinct character of hammered stone, the organic look is enriched with DuraFusion Technology for an enhanced texture and wear-resistance.



MIDNIGHT 



SCANDINA GRAY 

*Due to the natural materials in our products, colors may vary from those shown on the cut sheet. We recommend viewing actual product samples to ensure the perfect color and finish for each project.*



## QUALITY FOR LIFE

Every step of our manufacturing process incorporates rigorous research, testing and quality assurance. We demand the highest quality from each of our facilities across North America. We believe in creating world class building products that stand the test of time. See our lifetime warranty at [Beldgard.com/Warranty](https://Belgard.com/Warranty)

## FEATURES & BENEFITS


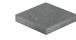

- Upscale texture of flamed or hammered stone
- Contemporary large-format sizing
- Maximized pallet layout for jobsite efficiencies
- Reduced cuts, installation time and waste
- Simplified quoting and design of projects
- Uniform sizing in true 3-inch increments
- Uniform dimensions compatible with other modular paver lines like Origins™ and Dimensions™



**DURAFUSION™ TECHNOLOGY**  
Refined texture with enhanced wear-resistance

## SHAPES & SIZES

### BASALT 18 | 60MM

-  9 x 18 x 2 $\frac{3}{8}$
-  18 x 18 x 2 $\frac{3}{8}$
-  18 x 27 x 2 $\frac{3}{8}$



MODULAR  
SIZING



DURAFUSION™  
TECHNOLOGY



ADA  
COMPLIANT

## PALLET INFORMATION

BASALT™ 3-PIECE		SQFT/ PALLET	UNITS/ LAYER	SQFT/ LAYER	LAYER/ PALLET	WEIGHT/ PALLET
BASALT 18 60MM	9 x 18 x 2 $\frac{3}{8}$	112.5	2	11.25	10	3232
	18 x 18 x 2 $\frac{3}{8}$		1			
	18 x 27 x 2 $\frac{3}{8}$		2			

Downloadable professional resources available at [Beldgard.com/Resources](https://Beldgard.com/Resources)

View the product page on [Beldgard.com](https://Beldgard.com) for more information



**BELGARD®** | PAVES THE WAY™

AN OLDCASTLE® APG OUTDOOR BRAND

**TACOMA**  
4110 192nd St. East  
Tacoma, WA 98446  
Ph: 844-371-5138