

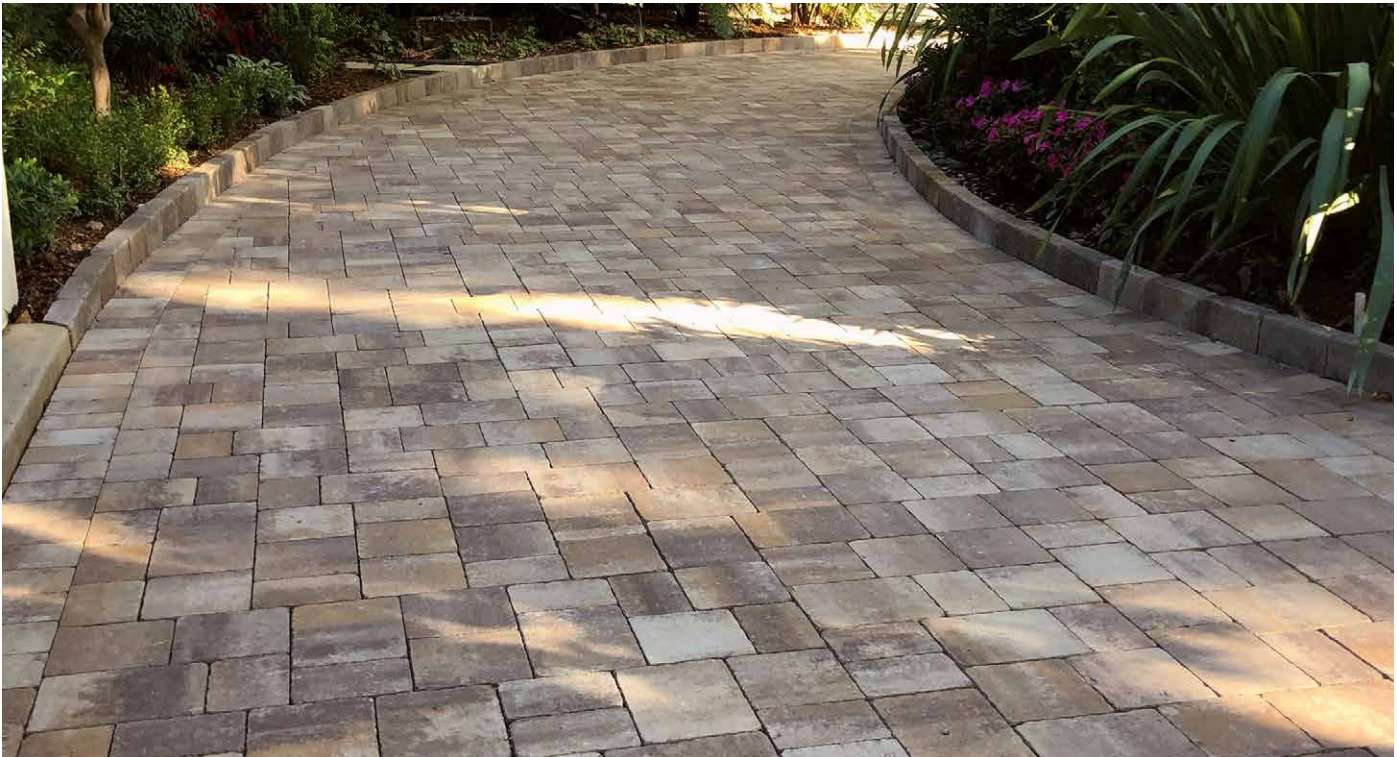
HERITAGE COLLECTION

ANTIQUED FLAT TOP

3-PIECE PAVER | 60MM



Featuring a textured, weathered appearance, this paver is perfect for creating a timeless look in outdoor spaces. It's enriched with DuraFusion Technology for enhanced texture and wear-resistance.



BROWN BEIGE CHARCOAL



CREAM TAN BROWN



GRAY CHARCOAL



GRAY CHARCOAL TAN



MIDNIGHT
Only available in 6 x 9



SHADED GRAY



TAN BROWN CHARCOAL



TAN RED CHARCOAL

Due to the natural materials in our products, colors may vary from those shown on the cut sheet. We recommend viewing actual product samples to ensure the perfect color and finish for each project.



QUALITY FOR LIFE

Every step of our manufacturing process incorporates rigorous research, testing and quality assurance. We demand the highest quality from each of our facilities across North America. We believe in creating world class building products that stand the test of time. See our lifetime warranty at [Belgard.com/Warranty](https://www.belgard.com/Warranty)

FEATURES & BENEFITS

- Gently weathered smooth-faced 3-piece system
- Optional accent paver available for borders and creative patterns
- Ideal for walkways, patios, pool decks and residential vehicular applications



DURAFUSION™ TECHNOLOGY
Refined texture with enhanced wear-resistance

SHAPES & SIZES

3-PIECE | 60MM



6 x 9 x 2 $\frac{3}{8}$



9 x 9 x 2 $\frac{3}{8}$



9 x 12 x 2 $\frac{3}{8}$

6 X 9 | 60MM



6 x 9 x 2 $\frac{3}{8}$



PALLET INFORMATION

ANTIQUED FLAT TOP		SQFT/ PALLET	UNITS/ LAYER	SQFT/ LAYER	LAYER/ PALLET	WEIGHT/ PALLET
3-PIECE 60MM	6 x 6 x 2 $\frac{3}{8}$	25	8	2.78	9	2940
	9 x 9 x 2 $\frac{3}{8}$	40	8	4.44		
	9 x 12 x 2 $\frac{3}{8}$	40	6	4.44		
6 X 9 60MM	6 x 9 x 2 $\frac{3}{8}$	98	30	10.88	9	2774

Downloadable professional resources available at
[Belgard.com/Resources](https://www.belgard.com/Resources)

View the product page
on [Belgard.com](https://www.belgard.com) for
more information



LEARN MORE

BELGARD® | PAVES
THE WAY™

AN OLDCASTLE® APG OUTDOOR BRAND

STOCKTON
4202 Gibraltar Court
Stockton, CA 95206
Ph: 209-983-1609

SAN MARTIN
13775 Llagas Ave
San Martin, CA 95046
Ph: 408-686-9627

TRACY
426 E Grant Line Rd
Tracy, CA 95376
Ph: 209-833-7366

GILROY
5787 Obata Way
Gilroy, CA 95020
Ph: 408-984-8800

© 2025 Oldcastle® APG, Inc. All Rights Reserved. BEL24-D-322433 | Pacific Stockton | Revised 01/2025