

## HARDSCAPE LIGHTS FOR WALLS, STEPS & OUTDOOR KITCHENS



### TS-A6000-BRZ/BLK Replaceable LED Step & Wall Light

Designed to illuminate walls, steps, and outdoor kitchens. Available in a 7" width

- 1 Watt
- 75 Lumens
- Replaceable integrated LED light module
- 2700 Kelvin Light Temperature
- Constructed of Powder Coated Aluminum with Bronze or Black finish



### TS-A6000C-BRZ/BLK Replaceable LED Step & Wall Light

NEW TS-A6000C features RGBCW capability, Dimming and Kelvin temperature adjustment through the Tru-Scapes Smart Control App

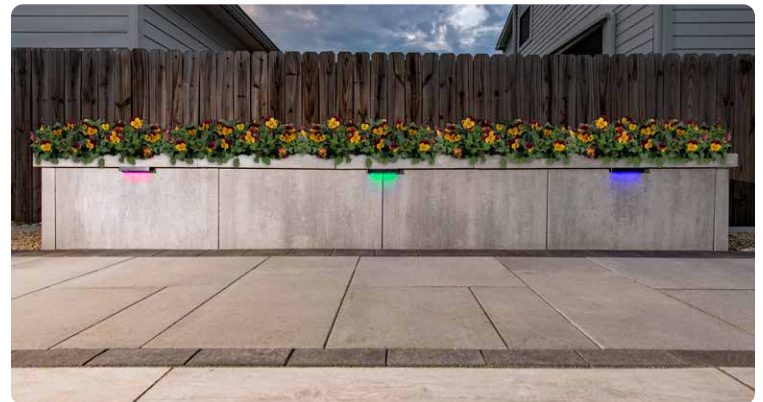
- 1.5 Watts
- 65 Lumens at 2700K
- Replaceable integrated LED module
- Constructed of Powder Coated Aluminum with Bronze or Black Finish



### TS-MA6000-GRY Modern Hardscape Light

A modernized look to our classic step and wall light with a higher Kelvin light temperature

- 1 Watt
- 78 Lumens
- Replaceable integrated LED light module
- 4000 Kelvin Light Temperature
- Constructed of Powder Coated Aluminum with Gray finish



## PILLAR LIGHTS



### TS-PL100-BRZ Traditional Pillar Light

Includes all components required for installation

*(Mounting Base, Drill Template, Anchor Kit, Masonry Drill Bit, LED lamp and wire nuts)*

- 9" x 9" x 20" h
- 360° Beam Spread LED Lamp
- 3 Watt
- 300 Lumens
- G4 Bi-Pin LED Bulb
- 2700 Kelvin Light Temperature
- Constructed of Powder Coated Aluminum with Bronze Finish



### TS-PL101-BRZ/BLK Modern Pillar Light

Includes all components required for installation

*(Mounting Base, Drill Template, Anchor Kit, Masonry Drill Bit, LED lamp and wire nuts)*

- 9" x 9" x 18" h
- 360° Beam Spread LED Lamp
- 3 Watt
- 300 Lumens
- G4 Bi-Pin LED Bulb
- 2700 Kelvin Light Temperature
- Constructed of Powder Coated Aluminum with Black or Bronze Finish



### TS-PL102-BRZ Noble Pillar Light

Includes all components required for installation

*(Mounting Base, Drill Template, Anchor Kit, Masonry Drill Bit, LED lamp and wire nuts)*

- 11" x 11" x 20" h
- LED lamp module with RGBCW capability plus dimming & Kelvin temperature adjustment
- 6 Watt with RGBCW capability
- 250 Lumens at 2700K
- Constructed of Powder Coated Aluminum with Bronze Finish





## PAVER LIGHTS FOR PATIOS, WALKWAYS, AND DRIVEWAYS



### TS-HPL-6, TS-HPL-8 & TS-HPL-9

#### Traditional Low Voltage LED Paver Lights

Available in 6", 8" and 9" Length to match popular Soldier or Sailor course edge pavers

- 60 mm Height
- 6" - 1.5 Watt, 8" - 1.8 Watt, 9" - 2.5 Watt
- 6" - 35 Lumens, 8" - 45 Lumens, 9" - 60 Lumens
- Base feet to prevent lift from freeze/thaw
- Protective tear off strip for protection during installation
- Integrated Sealed Construction
- 2700 Kelvin Light Temperature LED Lamp



### TS-MHPL-6, TS-MHPL-8 & TS-MHPL-9

#### Modern Low Voltage LED Paver Lights

Available in 6", 8" and 9" Length to match popular Soldier or Sailor course edge pavers

- 60 mm Height
- 6" - 1.5 Watt, 8" - 1.8 Watt, 9" - 2.5 Watt
- 6" - 42 Lumens, 8" - 54 Lumens, 9" 72 Lumens
- Base feet to prevent lift from freeze/thaw
- Protective tear off strip for protection during installation
- Integrated Sealed Construction
- Modern version features 4000 Kelvin temperature



## DOT LIGHTS FOR CONCRETE, STONE, WOOD, OR COMPOSITE DECKING



### TS-15DOT-BRZ

#### Traditional Low Voltage LED Dot Light

Easily install in concrete, stone, wood, or composite decking

- 60° Beam Spread LED Lamp
- 2700 Kelvin Light Temperature
- Installed with a 1" Drill Bit
- 1.5" Diameter Anodized Bronze Ring



### TS-M15DOT-SS

#### Modern Low Voltage LED Dot Light

Easily install in concrete, stone, wood, or composite decking

- 60° Beam Spread LED Lamp
- 4000 Kelvin Light Temperature
- Installed with a 1" Drill Bit
- 1.5" Diameter Stainless Steel Ring



### TS-25DOTC-BRZ/SS

#### NEW 2.5" In-Ground LED Dot Light

With Tru-Scapes Smart App Control Capability

- 1.5 Watts at 2700K
- 60° Beam Spread LED Lamp
- Adjustable Kelvin Temperature
- Installed with a 2" Drill Bit
- 2.5" Diameter Bronze or Stainless Steel Ring



### TS-M25DOT-SS

#### Modern Low Voltage LED DOT Light

Easily install in concrete, stone, wood, or composite decking

- 60° Beam Spread LED Lamp
- 4000 Kelvin Light Temperature
- Installed with a 2" Drill Bit
- 2.5" Diameter Stainless Steel Ring



### TS-25DOT-BRZ

#### Traditional Low Voltage LED Dot Light

Easily install in concrete, stone, wood, or composite decking

- 60° Beam Spread LED Lamp
- 2700 Kelvin Light Temperature
- Installed with a 2" Drill Bit
- 2.5" Diameter Anodized Bronze Ring



## ACCENT/SPOT LIGHTS FOR TREES, PLANTS, HOUSES & LANDSCAPE FEATURES



**TS-B102**  
**Traditional Accent Light**

Accent for key landscape features

- 40° Beam Spread LED Lamp
- 4 Watt
- 250 Lumens
- MR16 LED Lamp Included
- 2700 Kelvin Light Temperature
- Constructed of Solid Brass
- Optional LED lamp module with RGBCW capability plus dimming & Kelvin temperature adjustment 



**TS-B105**  
**Wall Wash Light**

Wide beam output – great for walls and landscape features

- 60° Beam Spread LED Lamp
- 5.5 Watt
- 450 Lumens
- MR16 LED Lamp Included
- 2700 Kelvin Light Temperature
- Constructed of Solid Brass
- Includes a frosted lens to reduce glare



**TS-B106**  
**High Power Accent Light**

Great for larger mature trees & flagpoles


- 120° Beam Spread LED Lamp
- 8 Watt
- 900 Lumens
- PAR36 LED Lamp Included
- 2700 Kelvin Light Temperature
- Constructed of Solid Brass
- Optional LED lamp module with RGBCW capability plus dimming & Kelvin temperature adjustment 

## IN-GROUND WELL LIGHTS FOR TREES, PLANTS, HOUSES & LANDSCAPE FEATURES



**TS-B201**  
**High Power In-ground Well Light**


Highlight houses, larger mature trees & flagpoles

- 120° Beam Spread LED Lamp
- 8 Watt
- 900 Lumens
- PAR36 LED Lamp Included
- 2700 Kelvin Light Temperature
- Constructed of a sealed composite housing with brass cowl and glass lens
- Optional LED lamp module with RGBCW capability plus dimming & Kelvin temperature adjustment 



**TS-B203**  
**Sealed In-ground Well Light**


Highlight focal point plants/trees or a wall, statue or fountain

- 60° Beam Spread LED Lamp
- 4 Watt
- 250 Lumens
- MR16 LED Lamp Included
- 2700 Kelvin Light Temperature
- Constructed of a composite housing with brass cowl and glass lens
- Optional LED lamp module with RGBCW capability plus dimming & Kelvin temperature adjustment 

## PATH LIGHTS FOR PATHWAYS, PATIO EDGES & FLOWER BEDS



**TS-B301**  
**Traditional Path Light**

- 360° Beam Spread LED Lamp
- 3 Watt
- 300 Lumens
- G4 Bi-Pin LED Lamp Included
- 2700 Kelvin Light Temperature
- Constructed of Solid Brass
- Optional LED lamp module with RGBCW capability plus dimming & Kelvin temperature adjustment 



**TS-B302**  
**Classic Path Light**

- 360° Beam Spread LED Lamp
- 3 Watt
- 300 Lumens
- G4 Bi-Pin LED Lamp Included
- 2700 Kelvin Light Temperature
- Constructed of Solid Brass
- Optional LED lamp module with RGBCW capability plus dimming & Kelvin temperature adjustment 



**TS-B306**  
**Modern Path Light**

- 360° Beam Spread LED Lamp
- 3 Watt
- 300 Lumens
- G4 Bi-Pin LED Lamp Included
- 2700 Kelvin Light Temperature
- Constructed of Solid Brass
- Optional LED lamp module with RGBCW capability plus dimming & Kelvin temperature adjustment 



TRU-SCAPES

# QUICK REFERENCE GUIDE 2024

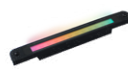
Tru-Scapes lighting is distributed exclusively by Belgard®

## NEW TRU-SCAPES COLOR CONTROL

Tru-Scapes fixtures and lamps with App control are now available – offering RGB Color control as well as Kelvin (Warm – Cool White), Dimming, and Zone control via Bluetooth connection from your device.



## RGBCW LAMPS



**TS-A6000C-RBULB**  
**Hardscape RGBCW Module**

1.5 Watts/65 Lumens at 2700K



**TS-360G4-C**  
**Path and Pillar RGBCW Lamp**

1.5 Watts/110 Lumens at 2700K



**TS-40MR16-C**  
**Accent Light RGBCW Lamp**

5 Watts/420 Lumens at 2700K



**TS-120PAR36-C**  
**High Power Accent & Well RGBCW Lamp**

8 Watts/640 Lumens at 2700K

*\*Standard replacement lamps and modules available*

## KEY FEATURES FOR FIXTURES

- Everything is included in the box – Fixture, LED Lamp, Gel filled wire nuts and heavy duty ground stake
- Tool-less design, simple hand assembly on site
- Directional Fixtures include a lock nut – essential for proper installation of the stake and fixture
- Lifetime Warranty on fixture socket and housing; Five year warranty in the finish and led lamp (\*5 year warranty on all transformers and accessories)
- UL and ETL Listed; FCC Compliant



For additional resources and installation videos,  
please visit [Belgard.com/Lighting](https://Belgard.com/Lighting)

**BELGARD®** | PAVES THE WAY™

© 2024 Oldcastle® APG, Inc. All Rights Reserved. BEL23-D-125800