

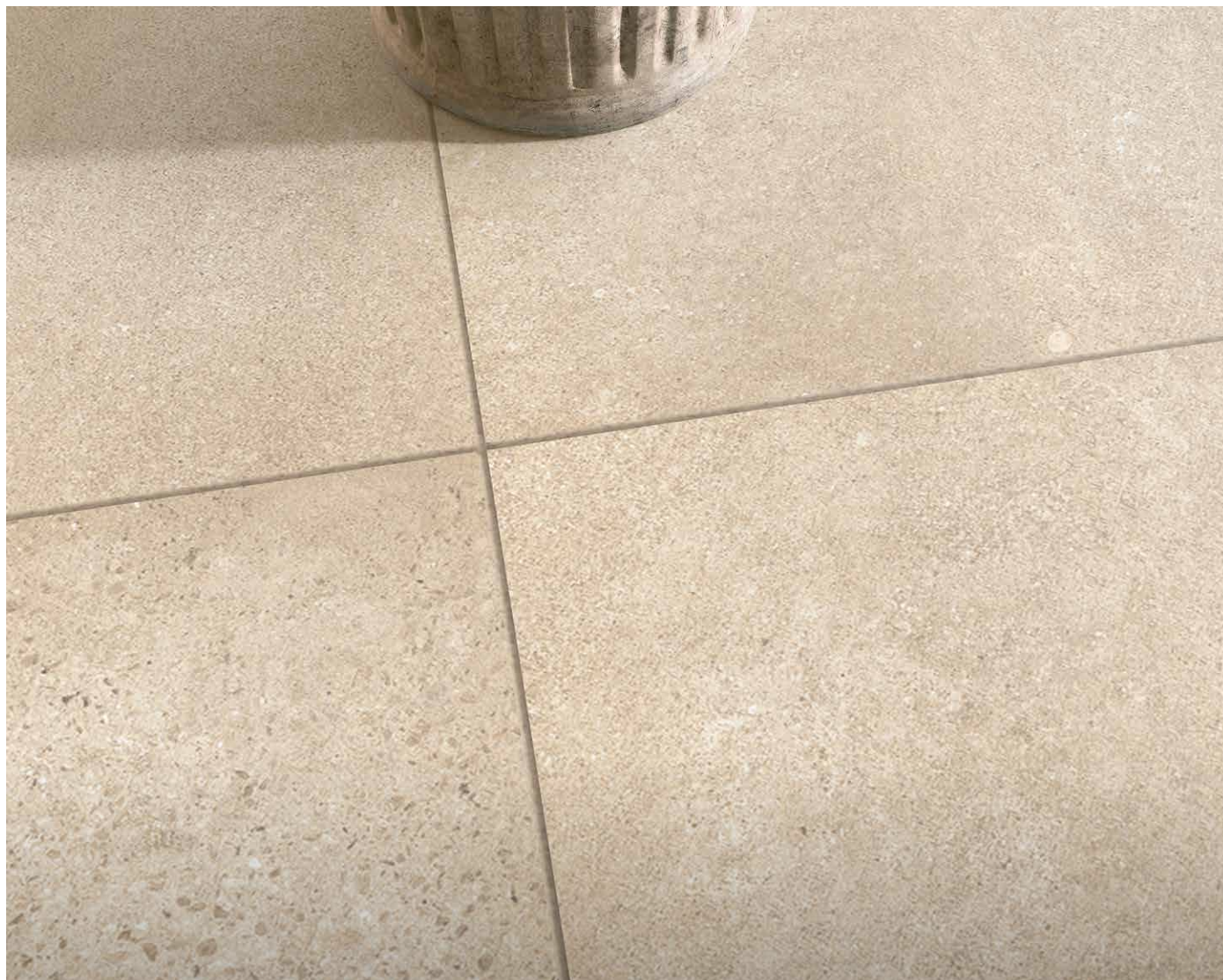
PORCELAIN COLLECTION

FOUNDATION™

CONCRETE FINISH | 20MM



These pavers exude timeless sophistication and a uniform look achieved by a smooth, refined surface texture, polished concrete appearance and neutral color tones.

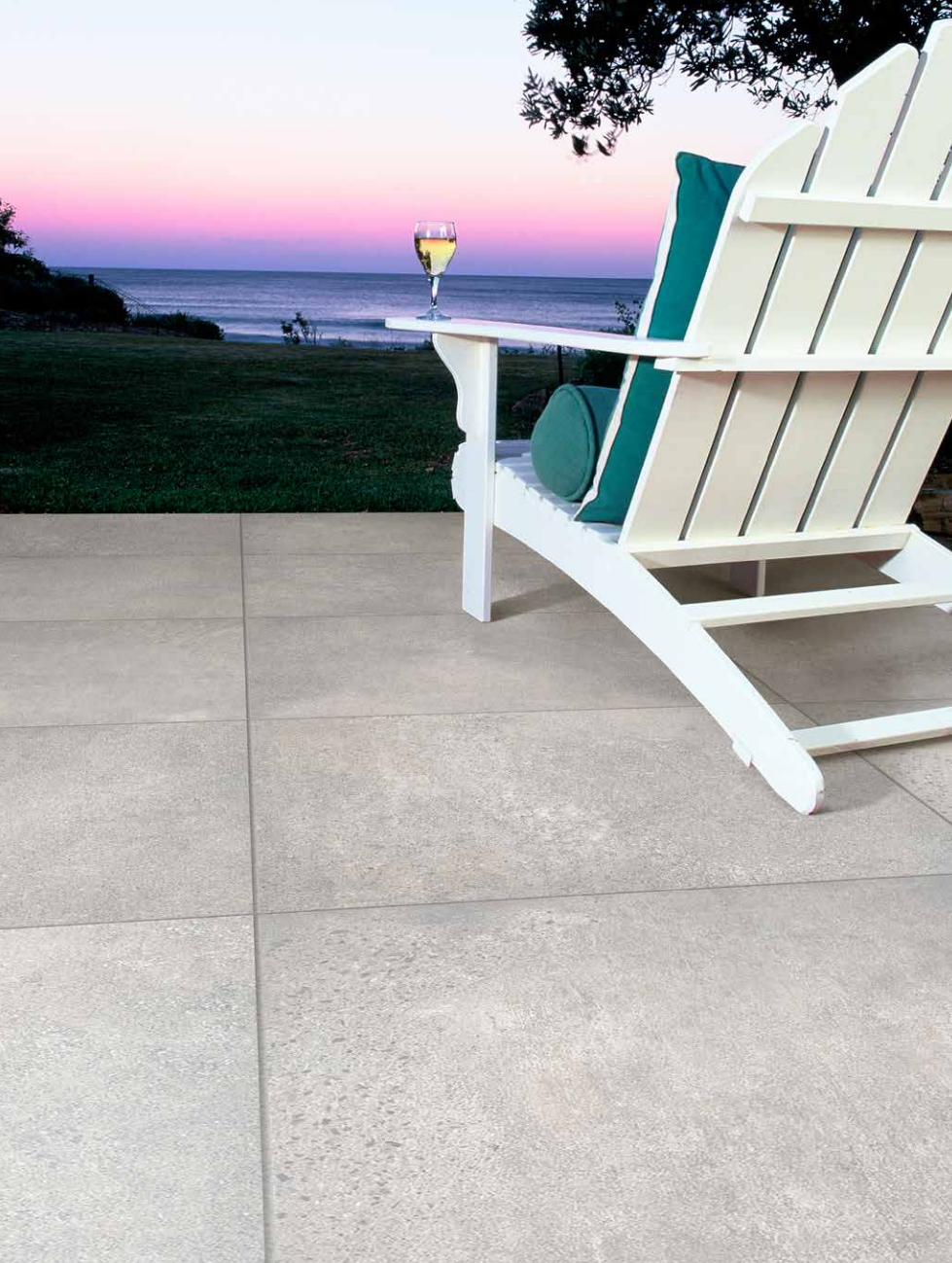


 AMBER BEIGE



 SCANDINA GRAY

Due to the natural materials in our products, colors may vary from those shown on the cut sheet. We recommend viewing actual product samples to ensure the perfect color and finish for each project.



QUALITY FOR LIFE

Every step of our manufacturing process incorporates rigorous research, testing and quality assurance. We demand the highest quality from each of our facilities across North America. We believe in creating world class building products that stand the test of time. See our lifetime warranty at [Beldgard.com/Warranty](https://Belgard.com/Warranty)

FEATURES & BENEFITS

- Organic polished concrete finish
- Incredibly high breakage loads, up to 3,000 pounds
- Modular for faster installation,
- Can be cleaned with normal household cleaners and even pressure washed with a low pressure washing device.*
- High density and ultra-low absorption rate creates a tight surface texture and fends off surface mold, moss, dirt and other type of stains
- Unaffected by alkalis, acids, chemical agents, salt and other de-icing materials
- Structured top textures create non-slip surfaces
- Freeze thaw resistant—100% frost-free and properties remain unaltered at temperatures ranging from -51.1° to + 60° C (-60°F to +140°F)

** It is important that all pressure washing of your porcelain pavers be done with a low pressure washer with a maximum of 1600 psi and nothing more powerful. When pressure washing your installation, care should be taken to prevent damage to the grout (adhesive and grout installations) and some re-sanding will be necessary when power washing an installation with sand or polymeric sand joints.*

SHAPES & SIZES

24 X 24



23.54 x 23.54 x 3/4

PALLET INFORMATION

	FOUNDATION™	SOFT/ PALLET	SOFT/ BOX	BOXES/ PALLET	PCS/ BOX	WEIGHT/ BOX	WEIGHT/ PALLET
24 X 24	23.54 x 23.54 x 3/4	275.04	7.64	36	2	67.84	2533.8

Downloadable professional resources available at Beldgard.com/Resources

View the product page on Beldgard.com for more information



BELGARD® | PAVES THE WAY™

AN OLDCASTLE® APG OUTDOOR BRAND

JONESBORO
1443 Battlecreek Road
Jonesboro, GA 30236
Ph: 770-478-8817

© 2025 Oldcastle® APG, Inc. All Rights Reserved. BEL24-D-322452 | GMS South | Revised 01/2025