

# CATALINA™ SLATE

PAVER

COMBINES THE FLEXIBILITY OF MODULAR DESIGN WITH THE  
TEXTURED FINISH OF NATURAL SLATE





# CATALINA™ SLATE

## PAVER

COMBINES THE FLEXIBILITY OF MODULAR DESIGN WITH THE TEXTURED FINISH OF NATURAL SLATE

### ✔ FEATURES & BENEFITS

- 3-Piece modular system
- Natural slate texture, perfect to add curb appeal to any home
- Paver color is blended through the entire paver for long lasting beauty
- Add a border or paver lights to complete the look

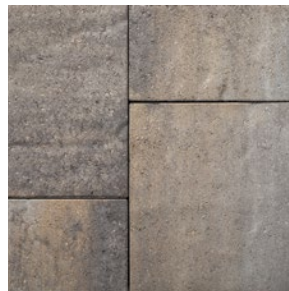
### 🔹 AVAILABLE COLORS



BELLA BLEND



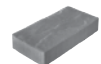
SABLE BLEND



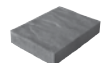
SILEX BLEND

### 📦 SHAPES & SIZES

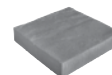
#### 3-PIECE LARGE | 60MM



6 x 12 x 2 $\frac{3}{8}$



9 x 12 x 2 $\frac{3}{8}$



12 x 12 x 2 $\frac{3}{8}$

**BELGARD®** | PAVES THE WAY

For more info, visit [Belgard.com](http://Belgard.com)

**ANCHOR**  
975 Burnt Tavern Road  
Brick, NJ 08724  
Ph: 1-800-682-5625



© 2022 Oldcastle® APG, Inc. A CRH Company. All Rights Reserved.  
Revised: 07/02/23 BEL22-412\_Anchor