

ENVIRONMENTAL COLLECTION

# AQUA-BRIC®

PERMEABLE PAVER | 80MM



Eliminate stormwater runoff with the classic look of a traditional paver. In addition to being environmentally friendly, its strength and durability make it ideal to support vehicular loads.



ARDENNES



MIDNIGHT



POTOMAC

*Due to the natural materials in our products, colors may vary from those shown on the cut sheet. We recommend viewing actual product samples to ensure the perfect color and finish for each project.*





DRIVEWAY  
APPROVED



PERMEABLE  
INSTALL



ADA  
COMPLIANT

## QUALITY FOR LIFE

Every step of our manufacturing process incorporates rigorous research, testing and quality assurance. We demand the highest quality from each of our facilities across North America. We believe in creating world class building products that stand the test of time. See our lifetime warranty at [Belgard.com/Warranty](https://www.belgard.com/Warranty)

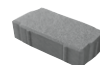
## FEATURES & BENEFITS

- Can eliminate stormwater runoff and improve water quality
- Meets the requirements of ASTM C936
- Smooth surface texture with a micro-chamfer to minimize vibration and enhance wheelchair comfort
- Can be utilized to construct an ADA-compliant pavement
- Innovative joint and void design optimizes structural performance
- False joint option (Type 4) provides a multi-size appearance
- Chamfer Width: 3 mm
- Joint Width: 5 mm
- Maintenance Void: 9 mm
- Surface Infiltration Rate: > 500 inches per hour (varies based on joint infill gradation)
- Surface Open Area: 9%

*Belgard permeable pavers can be used for a variety of different vehicular applications. Appropriate shape and thickness is based on project-specific conditions, including type of loading, base design, and subgrade conditions. It is recommended that you consult a Belgard Representative when specifying products for vehicular applications*

## SHAPES & SIZES

80MM



5 x 10 x 3 1/8

## PALLET INFORMATION

AQUA-BRIC®		SQFT/ PALLET	UNITS/ LAYER	SQFT/ LAYER	LAYER/ PALLET	WEIGHT/ PALLET
80MM	5 x 10 x 3 1/8	94	35	11.75	8	3102

Downloadable professional resources available at [Belgard.com/Resources](https://www.belgard.com/Resources)

View the product page on [Belgard.com](https://www.belgard.com) for more information



LEARN MORE

**BELGARD®** | PAVES  
THE WAY™

AN OLDCASTLE® APG OUTDOOR BRAND

**CLARKSVILLE**  
4235 Guthrie Highway  
Clarksville, TN 37040  
Ph: 931-647-3308

**ROCKWOOD**  
600 Cardiff Valley Road  
Rockwood, TN 37854  
Ph: 888-624-3088

© 2025 Oldcastle® APG, Inc. All Rights Reserved. BEL24-D-322471 | GMS Mid-South | Revised 01/2025