

DIMENSIONS™

SLAB

CRISP LINES, SMOOTH SURFACE IN A LARGE FORMAT
ULTRA-CONTEMPORARY DESIGNS WITH MAXIMUM EFFICIENCY



BELGARD
PAVES THE WAY™





DIMENSIONS™

SLAB

CRISP LINES, SMOOTH SURFACE IN A LARGE FORMAT
ULTRA-CONTEMPORARY DESIGNS WITH MAXIMUM EFFICIENCY

🔍 FEATURES & BENEFITS

- Smooth face with clean, crisp lines
- Maximized pallet layout for jobsite efficiencies
- Reduced cuts, installation time and waste
- Increased options for creative patterns
- Simplified quoting and design of projects
- Sizing compatible with all Belgard modular paver lines. Look for the Modular Paver icon



MODULAR SIZING
Sized in 3-inch increments for seamless integration

🔴 AVAILABLE COLORS



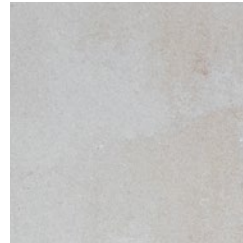
 ANTHRACITE



 HICKORY



 SCANDINA GRAY



 SEPIA



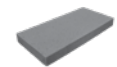
 SHADED GRAY

⚠️ PROPOSITION 65 WARNING:
This product can expose you to chemicals including Crystalline Silica, which is known to the state of California to cause cancer, and Cadmium, which is known in the State of California to cause birth defects or other reproductive harm. For more information, go to www.P65Warnings.ca.gov.

⚠️ PROPOSICIÓN 65 ADVERTENCIA:
Este producto puede exponerle a productos químicos incluyendo sílica cristalino, que el estado de California se sabe que causa cáncer, y Cadmio, que en el estado de California se sabe que causa defectos de nacimiento u otros daños reproductivos. Para más información, vaya a P65Warnings.ca.gov.

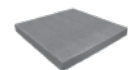
📦 SHAPES & SIZES

12 X 24



12 x 24 x 2%

24 X 24



24 x 24 x 2%



DURAFUSION™
Unmatched Durability

BELGARD® | PAVES THE WAY

For more info, visit Belgard.com

Oldcastle APG Pacific - FONTANA
10714 Poplar Ave.
Fontana, CA 92337
Ph: 909-355-6422
E: BuildWithBelgard@oldcastle.com



© 2024 Oldcastle® APG, Inc., A CRH Company. All Rights Reserved.
Revised: 02/29/24 BEL22-412_Oldcastle APG Pacific - Fontana