

DIAMOND[®] 9D

RETAINING WALL

A LIGHTWEIGHT SOLUTION FOR SEGMENTAL RETAINING WALLS WITH A WEATHERED STONE LOOK



BELGARD
PAVES THE WAY[™]



BACKED BY
ANCHOR
DIAMOND
INDUSTRY EXPERTS





DIAMOND® 9D

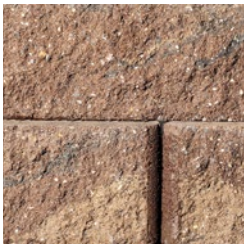
RETAINING WALL

A LIGHTWEIGHT SOLUTION FOR SEGMENTAL RETAINING WALLS WITH A WEATHERED STONE LOOK

📌 FEATURES & BENEFITS

- All system components are standard-split in-line
- Rear lip locators easily establish a uniform wall batter
- A matching cap and corner completes the system
- Build gravity walls up to 3 feet high*, including the buried course.
- Taller walls can be built using geosynthetic reinforcement when designed by a qualified engineer.
- Minimum outside radius, measured on the top course to the front of the units: 3 feet
- Minimum inside radius, measured on the base course to the front of the units: 6 feet
- The rear lip establishes a 1 1/8" setback for a 10.6 degree system batter

🔥 AVAILABLE COLORS



AUTUMN



VALLEY TAN



VICTORIAN

Cap also available in Bella & Toscana



PROPOSITION 65 WARNING:

This product can expose you to chemicals including Crystalline Silica, which is known to the state of California to cause cancer, and Cadmium, which is known in the State of California to cause birth defects or other reproductive harm. For more information, go to www.P65Warnings.ca.gov.

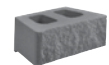


PROPOSICIÓN 65 ADVERTENCIA:

Este producto puede exponerle a productos químicos incluyendo sílica cristalino, que el estado de California para causar cáncer, y Cadmio, que en el estado de California se sabe que causa defectos de nacimiento u otros daños reproductivos. Para más información, vaya a P65Warnings.ca.gov.

📦 SHAPES & SIZES

STRAIGHT FACE



6 x 17 3/4 x 9

CAP



3 x 17 1/4 / 10 3/8 x 9

CORNER



6 x 18 x 9

BELGARD® | PAVES THE WAY

For more info, visit Belgard.com

SIERRA FONTANA

10714 Poplar Ave.

Fontana, CA 92337

Ph: 909-355-6422

E: BuildWithBelgard@oldcastle.com



© 2022 Oldcastle® APG, Inc. A CRH Company. All Rights Reserved.
Revised: 01/04/23 BEL22-412_Sierra F