

DIAMOND[®] 9D

RETAINING WALL

A LIGHTWEIGHT SOLUTION FOR SEGMENTAL RETAINING WALLS WITH A WEATHERED STONE LOOK



BELGARD
PAVES THE WAY[™]





DIAMOND[®] 9D

RETAINING WALL

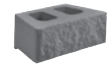
A LIGHTWEIGHT SOLUTION FOR SEGMENTAL RETAINING WALLS WITH A WEATHERED STONE LOOK

☑ FEATURES & BENEFITS

- All system components are standard-split in-line
- Rear lip locators easily establish a uniform wall batter
- A matching cap completes the system
- Build gravity walls up to 3 feet high*, including the buried course.
- Taller walls can be built using geosynthetic reinforcement when designed by a qualified engineer.
- Minimum outside radius, measured on the top course to the front of the units: 3 feet
- Minimum inside radius, measured on the base course to the front of the units: 6 feet
- The rear lip establishes a 1 1/8" setback for a 10.6 degree system batter

🧱 SHAPES & SIZES

STRAIGHT FACE



6 x 17 3/4 x 9

VIRTUAL JOINT



6 x 17 3/4 x 12

CAP



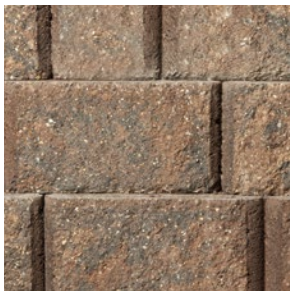
3 x 17 1/4 / 10 5/8 x 9

CORNER



6 x 18 x 9

🔥 AVAILABLE COLORS



ASHBURY HAZE



COTSWOLD MIST



GASCONT TAN

BELGARD[®] | PAVES THE WAY

For more info, visit Belgard.com

NORTHFIELD EAST

901 E. Troy Ave.
Indianapolis, IN 46203
Ph: 1-800-424-0190



© 2023 Oldcastle[®] APG, Inc. A CRH Company. All Rights Reserved.
Revised: 04/05/23 BEL22-412_NFD E