



Aqualine™ 4½" x 9" Permeable Paver

Aqualine 4½"x9" is a paver featuring not only the environmentally friendly benefits of a permeable paver, but also high visual appeal, low maintenance and proven durability. Aqualine's versatile pattern range when combined with additional sizes allows for flexible design options, making it an excellent choice for machine or hand installed plazas, sidewalks, parking lots, alleyways and roadways.



Benefits of Aqualine™ 4½" x 9":

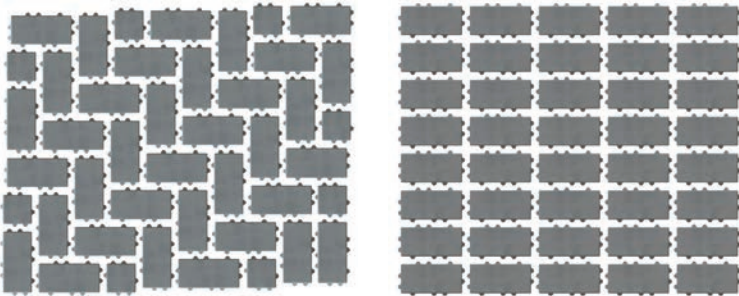
Belgard's Aqualine permeable pavement systems can eliminate stormwater runoff and improve water quality

- Interlocking spacer bars for increased structural performance
- Smooth surface texture with a micro-chamfer to minimize vibration and enhance wheelchair comfort
- Can be utilized to construct an ADA-compliant pavement
- True installed dimensions for design optimization
- Optimal joint openings for infiltration and maintenance
- Meet the requirements of ASTM C936

Benefits by the numbers:

- Chamfer Width: 3 mm
- Spacer Bar Width: 10 mm
- Surface Infiltration Rate: > 500 inches per hour
(varies based on joint infill gradation)
- Surface Open Area: 10%

Pallet Layers:



Check available options with your local Belgard Sales Representative

Belgard permeable pavers can be used for a variety of different vehicular applications. Appropriate shape and thickness is based on project-specific conditions, including type of loading, base design, and subgrade conditions. It is recommended that you consult a Belgard Representative when specifying products for vehicular applications.

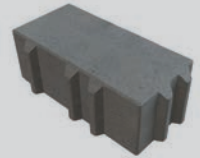
Aqualine™ 4½" x 9"

Approximate Dimensions

Paver

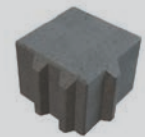
4½" x 9"

Available Thickness:
3⅞" (80 mm)



Half Paver*

4½" x 4½"



*When available in a Herringbone pallet configuration



Hardscapes Sales & Resource Center
625 Griffith Rd., Suite 115
Charlotte, NC 28317
800-545-5080

For more info visit: Belgardcommercial.com

Get Social

