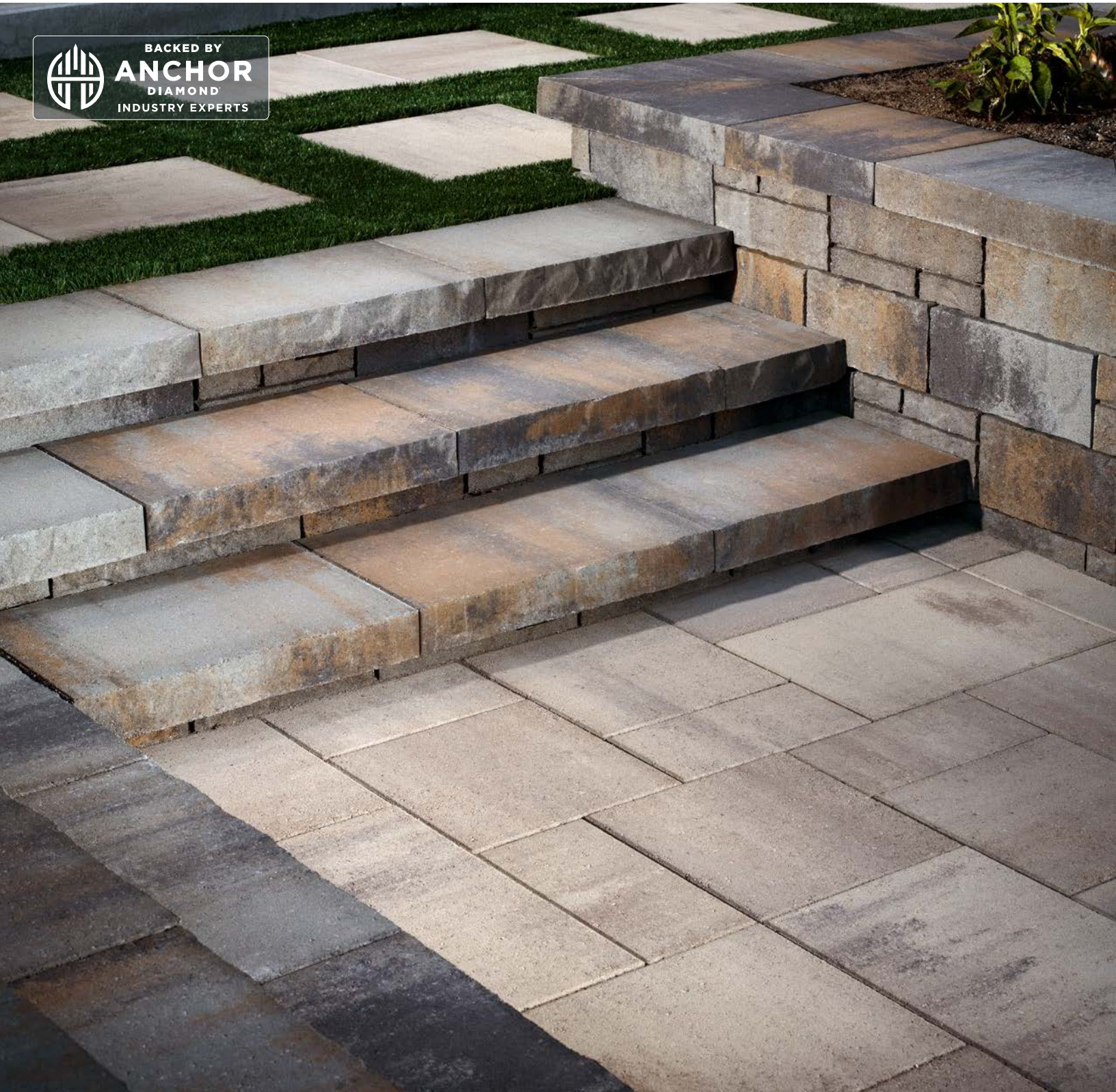


ASHLAR TANDEM™

FREESTANDING & RETAINING WALL

INNOVATIVE, VERSATILE SYSTEM PROVIDES THE APPEARANCE OF
NATURAL STONE THAT COMPLEMENTS ANY HARDSCAPE





ASHLAR™ TANDEM™

FREESTANDING & RETAINING WALL

INNOVATIVE, VERSATILE SYSTEM PROVIDES THE APPEARANCE OF NATURAL STONE THAT COMPLEMENTS ANY HARDSCAPE

☑ FEATURES & BENEFITS

- Distinctive chiseled stone texture manufactured to consistent height tolerances
- Build curved or straight walls
- Offered in 3 sizes to allow for design versatility and customization
- Minimum outside radius of 6'
- Freestanding walls up to 28"
- Engineered 90° corners
- Gravity walls up to 3 feet* using a 1/2 inch setback per unit (4 degree system batter)
- Reinforced walls up to 8 feet

🧱 SHAPES & SIZES

UNIT 1



7 x 13¹³/₁₆ x 2⁵/₈

UNIT 2



7 x 15¹³/₁₆ x 2⁵/₈

UNIT 3



7 x 18⁷/₁₆ x 2⁵/₈

MODULAR BLOCK UNIT & UNIVERSAL CONNECTOR*



7¹/₁₆ x 7⁷/₈ x 7⁷/₈

TANDEM® CAP



3¹/₄ x 24 x 15

LAGUNA CAP



3¹/₈ x 14³/₁₆ x 23⁵/₈

U-START BASE BLOCK



8" CONNECTING MEMBER



12 x 18⁷/₁₆ x 3¹/₂

*Universal Connector is used for the Tandem Modular Block

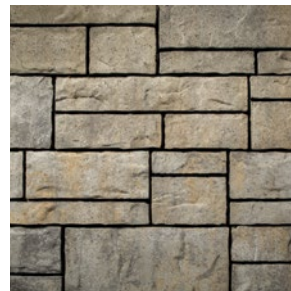
🔴 AVAILABLE COLORS



GRAPHITE



TOSCANA



VICTORIAN

BELGARD® | PAVES
THE WAY

For more info, visit Belgard.com

AMCOR
333 S. Redwood Road
North Salt Lake, UT 84054
Ph: 1-800-800-4004

1820 E / CO-402,
Loveland, CO 80537
Ph: 970-669-0535



© 2022 Oldcastle® APG, Inc. A CRH Company. All Rights Reserved.
Revised: 12/08/22 BEL22-412_Amcors