



Landings[™]

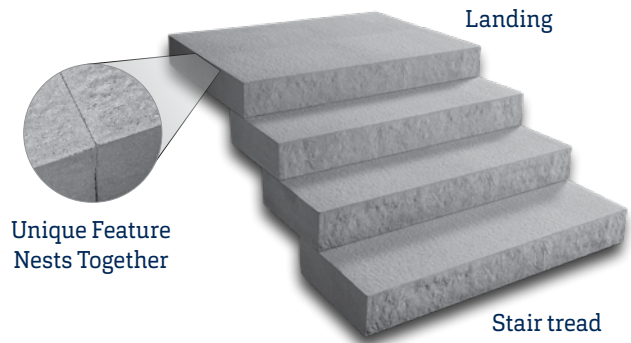
Step Unit



The Landings[™] step unit adds grand style to entrances and walkways with its quarried limestone look. Integrate into landscape projects or use as a standalone feature. With two unique faces on the rise, units can be nested together to create a landing or installed side by side for longer treads with excellent aesthetics.

Benefits of Landings™ Step Unit:

- Double-sided texture and two unique faces on the rise allow steps to be rotated for optimal aesthetics
- Smooth sides allow steps to be placed side by side for longer treads
- Granite-like texture on tread surface
- Even bottom and consistent size offer installation ease
- Palletized for easy removal by skid-steer loader
- Dry-cast production provides consistent colour throughout unit
- Riser faces are uniquely designed to nest together, creating an optional landing with a narrow joint



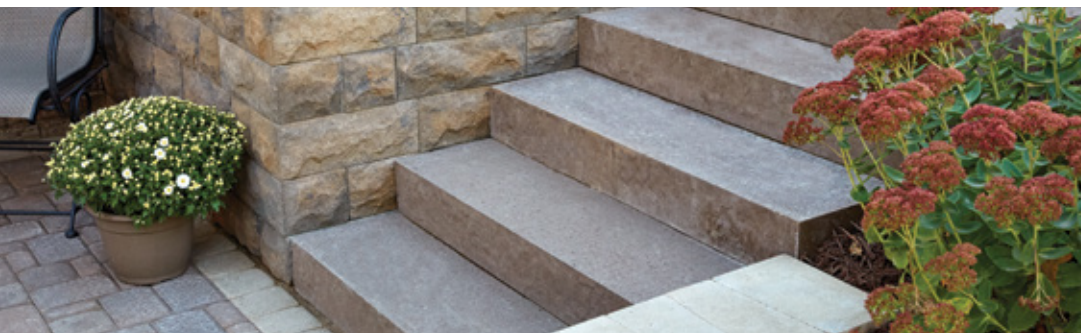
Colours:



GREY



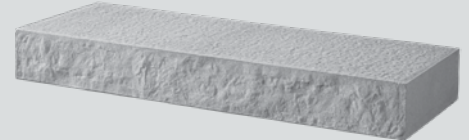
CHARCOAL



Approximate Dimensions (WxHxL)*

Step Unit
18" x 6" x 48"
457 mm x 152 mm x 1219 mm

Unit Weight: 181kg / 400lb



**Product dimensions are height by face length by depth. Actual dimensions may vary from these approximate values due to variations in manufacturing processes. Contact your Belgard representative for details.*

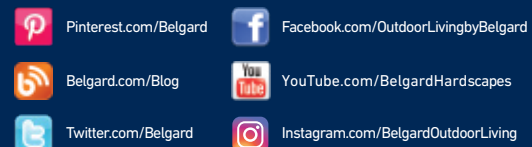
Wall Innovations By



Expocrete Concrete Products
British Columbia Alberta Saskatchewan Manitoba
800.232.9443

Belgard.com | Expocrete.com

Get Social



©2018 Oldcastle. All Rights Reserved. BEL18-956