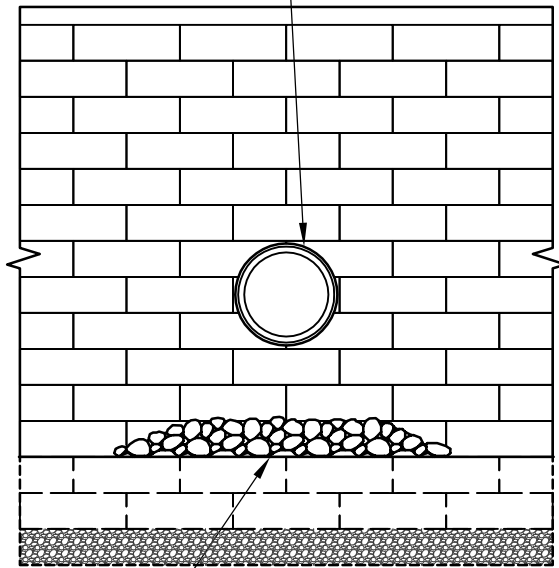
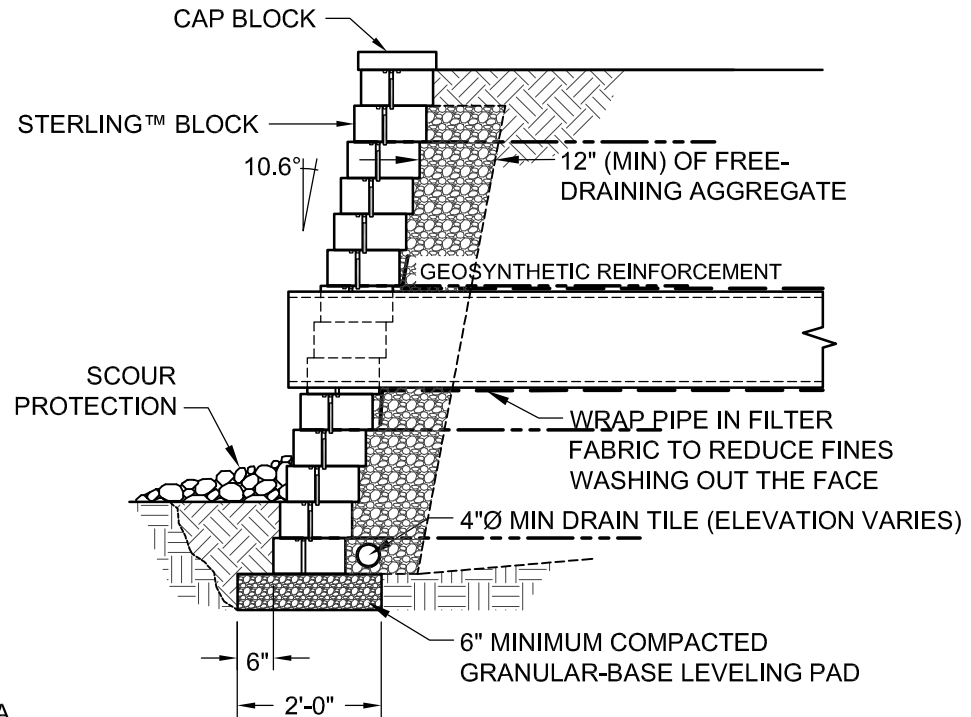


HAND CUT BLOCK UNITS
TO WITHIN 1/2" OF PIPE



SCOUR PROTECTION - AS
REQUIRED USE RIPRAP OR
PRECAST SLAB IN OUTLET AREA

FACE VIEW



SECTION VIEW



© 2017 Anchor Wall Engineering, LLC
© and ™ Anchor Wall Systems, Inc.
www.anchorwall.com

This drawing is for illustrative
purposes only and should not be
used for construction without the
signature of a registered
professional engineer.

Sterling™ Retaining Wall System

Typical Details for Small Utilities Through Wall

Scale: 3/8" = 1'-0"	Drawn by: SB
Date: 10/11/2017	Drawing number: SRST23