

STERLING[®]

WALL SYSTEM

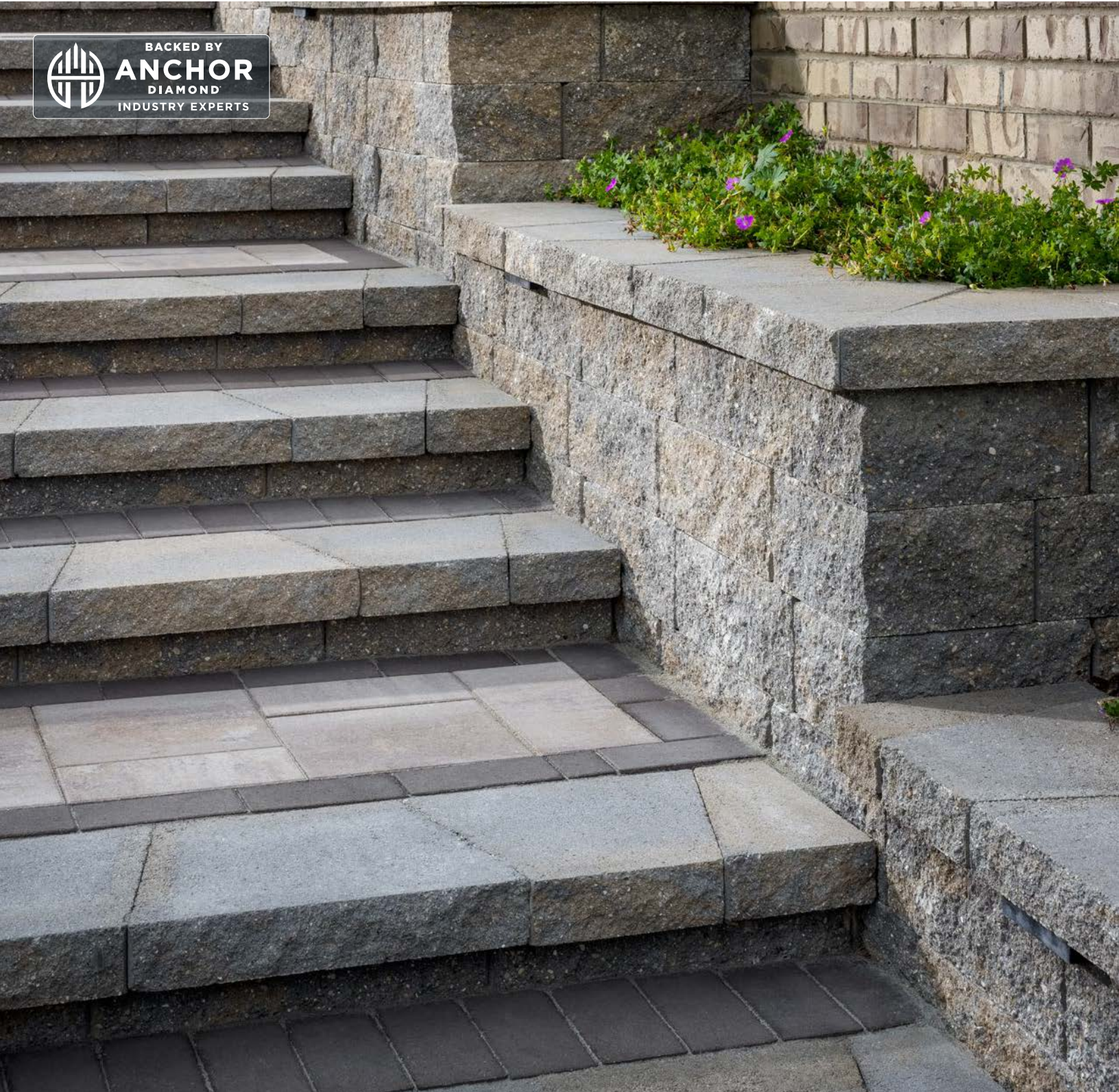
A VERSATILE RETAINING OR FREESTANDING WALL SYSTEM THAT
INSTALLS WITH AN EASY TO LOCATE PIN SYSTEM



BELGARD
PAVES THE WAY[™]



BACKED BY
ANCHOR
DIAMOND[™]
INDUSTRY EXPERTS





STERLING®

WALL SYSTEM

A VERSATILE RETAINING OR FREESTANDING WALL SYSTEM THAT INSTALLS WITH AN EASY TO LOCATE PIN SYSTEM

☑ FEATURES & BENEFITS

- Build retaining walls with easy pin alignment and side view for placement visualization
- Block channels make easy pin alignment for battered or freestanding retaining walls
- Score marks for splitting block to make a two-sided freestanding wall unit
- Center score mark provides guide for splitting to make corner or column units
- Hand holds allow for easier handling during installation
- Maximum gravity retaining wall height is 4 ft*
- Retaining wall minimum inside radius, measured on the base course to the front of the units: 6 ft
- Retaining wall minimum outside radius, measured on the top course to the front of the units: 4 ft
- Maximum freestanding wall (FSW) height is 3 ft*
- Freestanding wall minimum radius 4 ft
- Maximum column height is 4 ft*
- Segmental retaining wall setback/system batter 10.6°

🧱 SHAPES & SIZES

FREESTANDING WALL BLOCK



6 x 17¾ x 10

RETAINING WALL BLOCK



6 x 17¾ x 12

ANCHOR™ FIBERGLASS PINS*



5 x ½

UNIVERSAL CAP



3 x 18/12 x 13

**Gravity wall heights are based on project specific conditions and may be lower than this value. Check with your local Belgard Representative for product availability and color options.*

** Not included on pallet.*

BELGARD® | PAVES THE WAY

For more info, visit Belgard.com

Oldcastle APG - A CRH Company
400 Perimeter Center Terrace, Ste. 1000
Atlanta, GA 30346
Ph: (678) 461-2838



© 2022 Oldcastle® APG, Inc., A CRH Company. All Rights Reserved.
Revised: 01/17/23 BEL22-412